



# TUNE IN WITH 1



Fall 2013 Volume 28, Issue 2

## Inside this issue:

International information	2
RMT Articles	4
YWIH	13
Chorus articles	15
Memorial page	21
Quartet articles	27
Events Calendar	31

## Special points of interest:

- International information
- Fall Regional Meeting photos
- The new "Pin Pal" program
- Young Women In Harmony
- Show flyers
- Area School pictures



5 O'Clock Somewhere!



SoundWise



Essence



Houston Horizon Chorus



**HAWAII**  
NEXT EXIT

All contest photos courtesy of  
ER Lilley Photography





# Hawaii

## connection

**International Webcast address:**

It's free...but all donations are greatly appreciated!

**Click here for webcast address**

### 5:00 Somewhere

On stage: Wednesday, November 6, 2013 @ 10:02 p.m. (Houston time)

Follow them: <https://www.facebook.com/5OClockSomewhereQuartet>

### SoundWise

On stage: Wednesday, November 6, 2013 @ 4:16 p.m. (Houston time)

Follow them: <https://www.facebook.com/groups/SoundWiseQrt/>

### Essence

On stage: Wednesday, November 6, 2013 @ 10:46 p.m. (Houston time)

Follow them: <https://www.facebook.com/EssenceQuartet>

### Houston Horizon

On stage: Thursday, November 7, 2013 @ 3:52 p.m. (Houston time)

Follow them: <https://www.facebook.com/HoustonHorizon>







FAN

Gail Jencik

For more pics, [click here](#)





Rappin' w/ Ronda

Nothing but Blue Skies

Aloha Region 10,

Wow, what an awesome Fall Regional meeting! We had lots of fun, learned a lot from guest faculty, Gail Jencik, sang, and heard some GREAT singing from our Hawaii Bound competitors. If you weren't able to attend, the handouts for the classes are on the regional website. Please feel free to check them out. Handouts from the previous events are there as well.

We are fortunate to have 3 quartets qualify to compete in Hawaii and it's been a long time since we have had any wildcard competitors at International. We are well represented this year by Houston Horizon, 5 O'clock Somewhere!, SoundWise, and Essence. We wish them all the best. Leave nothing backstage, ladies!

Be sure to put January 17-18, 2014 on your calendar, as we have a great Winter Regional Event in store for you. Peggy Gram (past International President, member of International Faculty, master director of Top of the Rock Chorus, and bass of Rumors) is the guest faculty for this event. You won't want to miss the knowledge she has to share. If you are in a registered quartet, then this is your chance to perform for judges prior to regional competition, receive feedback, and get some coaching. If you are not in a quartet, it's your chance to connect with others to sing and/or learn to be a better singer and performer. Who doesn't need that, right? We are in the process of working out the logistics of having a "Pick-up quartet" contest, a mock contest for registered quartets, double quartet contest, and YWIH contest, so start working on your double quartet members. And remember, it can consist of 1 registered quartet and 4 others or 8 individuals. Who knows...this may be your chance to try out another voice part.

We have a lot of great people and exciting events coming your way. Be sure to check the regional web page, as some faculty and dates have changed. I hope you will join me at every opportunity to share in the fun, fellowship, and mostly, harmony.

Mahalo,  
Ronda Perez  
Education Coordinator for the Great Gulf Coast Region

## Mission Belles Attendance Award





# ▶▶▶ Happy Members

by Carol Mouché, Membership Coordinator, Great Gulf Coast Region 10



## Pins, More Pins and Attendance Awards: We Love Celebrating Our Members' Accomplishments

The **Global Open House** membership campaign, which normally takes place in January, has been so successful that International leaders suggested we expand it to include the month of September as well. Whether you choose to piggyback on the International campaign date or create one that works better for your chorus schedule, **member recruitment tools** are readily available in the **Marketing Center** (<http://sweetadelineintl.org/index.cfm?id=250>) -- or check out a summarized list of useful resources on the **Global Open House** (<http://www.sweetadelineintl.org/index.cfm?id=304>) web page.

One of the ways to keep our chorus members motivated about inviting guests to rehearsal and converting them to new members is Region 10's **"Plus One" pin program**. Every member responsible for referring a woman to the chorus is eligible to receive a pin once that membership has cleared International. Since the program was announced in January, the following recruiters have been "pinned" for helping to share their love of barbershop:

**Joan Felton** – Magic Valley Chorus – 2 new members

**Holly DiDomenico** – Crescent City Chorus – 1 new member

**Cheryl Gremillion** – Crescent City Chorus – 1 new member

**Debbie Mora** – Crescent City Chorus – 1 new member

**Lynda Grass** – Crescent City Chorus – 1 new member

**Maria Hudkins** – Chisholm Trail Chorus – 1 new member

**Patti Richter** – Fiesta City Chorus – 1 new member

**Sandy Hanne** – Chapter at Large (Prospective Heart of Dallas) – 3 new members

**Sha Hudgens** – Chapter at Large (Prospective Heart of Dallas) – 1 new member

We will continue to present pins until they run out. Your Membership Coordinator has the paperwork to make this happen. Won't they look great next to your "Pin Pal" (chapter) pins?

Speaking of, the **"Pin Pal Program"** was initiated at our 2013 Fall Regional Meeting with **11 choruses** bringing pins to trade. What a wonderful diversity of colors and styles! Every Region 10 chorus is encouraged to participate; keep the costs low and the creativity high. The next opportunity to trade will be at Winter Regional Meeting in January.

We also love to recognize choruses who are able to bring many of their members to Regional meetings. The **Mission Belles Attendance Award** is given at Fall and Winter regional meetings based on a formula that includes the number of chorus members attending and distance driven to the event. Remind your chorus members that registration costs for the weekend meetings (excluding contest) are already included in their regional assessment. Attendees often reduce expenses by carpooling and room-sharing – encourage everyone to take advantage of this international-caliber education.

The winner of the **Mission Belles Attendance Award** for Fall Regional was **Acappella Unlimited Chorus (San Marcos)** and they received reserved seats for the Saturday night entertainment as well as a traveling plaque. Congratulations!

The guest faculty for our **January 17-18, 2014 workshop** in Houston will be **Peggy Gram**. Put it on your calendar now and encourage all of your risermates to do the same. For those not familiar with Peggy, she is a 30+ year quartet member who has sung as a lead, a baritone and a bass. She is a 2-time international quartet champion (1999- Rumors and 1987 - Ginger 'n' Jazz) and sang baritone/bass for the Ark Angels Quartet for 25 years.

Peggy is a Master Director and has been a chorus director for 30 years, taking Top Of The Rock Chorus (Little Rock, AR) to a Region #25 championship several times and once winning the Harmony Achievement Award. She is also past international president of Sweet Adelines International, a Certified Showmanship Judge and on the International Faculty.

Please remember that your **Regional Management Team** is willing and able to assist you through short- and long-term challenges, or to help answer any question (ie finances, marketing, communications, music education, membership) you may have about keeping your chapter running smoothly. **Anyone** in your chorus is welcome to call or email us for assistance. Our contact information is available in the Regional Directory (every President/Team Coordinator has a copy) and on the Region 10 website at: <http://www.region10sai.org/management-team>.





# THE PIN PAL PROGRAM

## Great Gulf Coast Region 10 "Pin Pals" Program (established 2013)

**Concept:** In the interest of learning more about our region's choruses and each other, each chorus will create/obtain lapel pins that their members will trade with other chorus members during regional events. The idea is to really meet the person you exchange with, so when you look at the pin several months after you receive it, you can tell someone "Becky gave this to me. She sings baritone in Harmony Blends Chorus." We also want to instill a sense of pride in your chorus.

### Details:

- Funding -- There is no funding from the Region for this -- each chorus is on its own creatively and financially.
- When -- Have the pins ready for your members to begin exchanging at Fall Regional [Sept 20-21, 2013]. (and every Regional meeting/contest thereafter)
- Amount -- Ideally, each chorus member should have at least (2) pins to exchange at each event. Smaller choruses, don't fret -- fewer members/pins will make collecting yours more 'special.'
- Dimension -- preferably no more than 1.5 inches in diameter.
- Shape -- any shape within 1.5-inch limit
- Color -- any color
- Design -- something that represents YOUR chorus that you can use for several years. Ideas: geographic, food, culture, flower, bird, armadillo, bluebonnet, star, heart, roadrunner, beachball, fleur de lis, crawfish, pine tree, train, chili pepper, lasso, longhorn, shape of state, cotton, pecan, pelican. Note: the "pin" can be attached with magnet if preferred.

### Notes:

- This is a voluntary program. Your chorus does not have to participate, but it sure would be fun if everyone did!
- Lapel pin does NOT have to have your chorus name or logo printed on it.
- Recommend do NOT put a year on it (so you can use it for awhile, especially if you purchase/make in quantity).
- Be creative. Encourage members to scout out local stores (purchase locally if you can). Someone can design or you can purchase "off the shelf." Consider holding a design contest to involve your members. Keep costs to your chorus as low as possible.
- If you make your own, be sure they are good quality materials so they will hold up.
- As a fundraiser for International in Baltimore, The Woodlands Show Chorus will be creating sashes/lanyards to display these pins. They will have a booth at the Fall 2013 meeting. If you have a specific "chorus color," let them know and they will try to have some available in that color for you. Contact Bobbie Groeschel directly at [bjgroes@sbcglobal.net](mailto:bjgroes@sbcglobal.net).

Questions about the program? Contact Membership Coordinator Carol Mouché at [Region10mem@aol.com](mailto:Region10mem@aol.com)

05/20/13



# "Direct"ly Speaking *by Sheri Strawther*



## Region Ten Directors:

I hope you've all had a happy and relaxing summer. It was great spending time with many of you at the Side by Side director and judge training. We need to all get together more often to catch up and help each other on our "musical journey". Region 10 is excited to once again offer our Director Seminar for 2014. Unfortunately, Sharon Babb will not be able to be with us this year because of a judging conflict. However, we were able to schedule the awesome International faculty duo Molly Huffman and Bev Miller for our combined Director Seminar and Musical Leaders workshop. Molly and Bev are well known throughout our organization for their incredible seminars. Much more information will be coming about this educational weekend. Please mark your calendars now for May 16-17 2014. I know those of you who had the opportunity to attend the International Side by Side workshop this summer were able to bring back many wonderful educational tools and ideas for your choruses. An excellent outline written

by Betty Clipman and Sandy Marron, is a great tool giving step by step instruction on how to give a PVI. I hope you are able to use their guidelines as you work with your singers. Have a great Fall everyone as you prepare for your chapter shows, Christmas programs, contest, etc. Hope to see you all in Hawaii!

## Personal Vocal Instruction Instruction for Instructors

Because you have such a short amount of time with her, it's important to make her feel relaxed and comfortable right away.

A good way to start is to ask her what she likes about her voice and what she wants to improve about her voice.

You could ask her if she came to the PVI with a specific challenge or problem. She may or may not have thought of this in advance. Many singers don't have this level of self-awareness, and many are highly self-critical.

Encourage her to record the PVI so she can hear the difference afterwards, and be reminded of the specific instruction you gave her.

When it's time for her to sing, you could ask her to sing a few phrases of one or two of the contest songs. You could even chose a specific phrase in a song if you have limited time. Be prepared with a pitch pipe or access to a piano to get her started.

If she's especially nervous, have her face the furthest away point of the room so she projects more, plus it turns her slightly away from you so she isn't distracted or unnerved by you staring at her. You can always watch her whole body if she is turned on a slight angle to see if she is breathing correctly or her posture needs work, or she is singing with excessive tension.

While she is singing, be very aware of your body language and facial expression.

Listen for good things you can say about her voice/performance, as well as one or two things you can say for her to improve.

Samples of positive things you could say to her:

- \* You have wonderful clarity to your voice in your upper (or lower, or mid, or all) range.
- \* There is a nice warmth in your voice (be specific about where in her range you heard this).
- \* You sing with so much passion (or authority, or command, or joy, or abandon, or \_\_\_\_).
- \* You are very accurate and obviously understand the finer points of Pythagorean tuning.
- \* You have a very solid understanding of the musical plan for the song.

When you give her feedback on the one or two things she needs to work on (pick the most important things first, the things that will make the biggest improvement in her vocal performance), be as specific as you can. Remember to use the feedback sandwich: 1<sup>st</sup>, a positive; 2<sup>nd</sup>, an area to improve; and 3<sup>rd</sup>, a positive.

Demonstrate with your own voice and body to show her what you mean.

Things to listen and look for:

- Breath- is she breathing correctly? Fix this first, if not.
- Breath management-maximizing her breath for full phrase length and vocal energy. Make sure she's hooking up her breath to producing the sound.
- Make sure she's singing with enough breath pressure behind all the notes. This fixes a lot of other fundamental problems.
- Tone production-is the tone freely produced and appropriately resonated? Is she singing with tension? Watch for the tongue/jaw getting in the way. This is one of the most common problems.
- Is she singing with the correct amount of head/chest mix? Is she trying to sing too high in her full chest voice, or too low in her full head voice? Is she negotiating her break smoothly?
- If pitch is a problem, it's either because of poor tone production (intonation problems because of an inappropriately resonated tone, or tension filled production), or because of a poor ear or incorrect intervals (tuning problems). You should be able to figure out which one it is and go from there.
- Work on keeping her face lifted, tongue forward, breath support consistent, and explain (and demo) how this changes her sound.
- Completing phrase endings with energy and lift

Again, there are many other things that you could coach her on. Be creative, but stick to just a few things in one session. And keep praising her throughout.

When in doubt, don't make something up just so you look good! This could cause more damage. Just admit you don't know how to fix something and then tell her you will find out more tools and get back to her. This is especially true if you suspect something that may be only addressed by a speech therapist or doctor.

If you know her well, use the appropriate ratio of left vs right brained explanations for things.

It's always best to know more than one way to explain something to a singer. Teach it to her technically, and also give her a metaphorical analogy to help her visualize something. For instance, when I want a singer to sing with more upper range resonance and pitch, I would say exactly what the desired result is: "I want you to sing with more upper range resonance and pitch". Then tell her a left brain way to achieve it: "Lift your soft palate more while keeping your tongue relaxed and forward". Then give her a right brain explanation of the same thing: "Sing with a more velvety tone, like you're an opera singer, and imagine that you need to vibrate your upper molar fillings".

Summarize the session and thank her for trusting you!



# SIDE BY SIDE

Submitted by Janie Macchiaroli

This past July 18-21, a group of Region 10 members traveled to the Los Angeles area (Chapman University). "Why?" you may ask. Well, we went there to attend the Sweet Adelines International (SAI) education seminar called Side by Side. Every other year, SAI offers a seminar for front-line chorus directors and for judges, side by side. Some classes were aimed at both groups together, but many classes focused on one group or the other. Most of Region 10's chorus directors attended and those of us who are judges attended also.

The director classes covered many topics such as "The Director as Weekly Coach", "Rookie Programs", "Riser Placement", "and Music Selection". Each director selected her/his classes ahead of time. Some directors were lucky enough to enjoy one-on-one training to enhance their arm-waving ability. All directors were introduced to the new Open Division of regional competition. Networking and information sharing took place between classes, during meal times, walking from one classroom to the next, and in the few unscheduled hours available to us.

The judging classes included in-depth discussions of each judging category, practice judging of live quartet and chorus performances, and an in-depth explanation of the new Open Division of regional competition. Judges also enjoyed a master class with Deke Sharon, founder of CASA, producer of "The Sing-Off" TV show, and a cappella guru. We listened and learned as Deke evaluated the performances given by several quartets and choruses. It was an eye-opening experience to hear his expert analysis of our "amateur" performances.

We all came away from the seminar with new tools in our tool boxes and with new friends from somewhere in the wide world of SAI. Overall, we enjoyed a great variety of helpful, fun classes. And, chances are, you have already experienced the results of the training that your director received during this seminar!



## Competition Changes Coming

Changes to the competition system are in the works and on the way. To take a look at an outline of those changes, click the graphic to the left.

This article was published in the October 2012 issue of *The Pitch Pipe* and was written by Marcia Pinvidic, City of Gardens Chorus, Region 26.



# 2013-2014 Regional Management Team

Communications Coordinator

Karla Fenton

Directors Coordinator

Sheri Strawther

Education Coordinator

Ronda Perez

Events Coordinator

Marilyn Turner

Finance Coordinator

Cheryl Pyle

Marketing Coordinator

Elizabeth McCurdy

Membership Coordinator

Carol Mouché

Team Coordinator

Gail Eltgroth

We've all heard the phrase "it takes a village." Well, as Sweet Adelines, we know it takes a chorus to raise funds, select music and hire coaches, research costumes, put on a show, organize a guest night, get to regional competition, administer a chapter, etc.

It takes just as much effort to keep Region 10 healthy and moving forward. The current Regional Management Team (RMT) along with the committees who work under these team members are a prime example of the passion that propels the region to excellence in musical education and performance.

The RMT is always looking for energized individuals to serve on committees and possibly take their place at the Team Table. Please consider stepping out of your comfort zone and completing an application. You don't need to make a commitment -- just indicate your willingness, interests and skills. Many jobs are short term. [http://www.region10sai.org/sites/default/files/resources/Committee\\_App-2012.pdf](http://www.region10sai.org/sites/default/files/resources/Committee_App-2012.pdf)

The team has a 'shadow program' in place where you can learn from observing team meetings and shadow the team member's process through the year.

<http://www.region10sai.org/sites/default/files/resources/RMT-App2012.pdf>

Everyone on the RMT serves actively in her own chorus as well – proving that you CAN share your knowledge and skills in both places.

Team members are always available to answer questions at regional weekends; contact information is also on the Region 10 web site.

In Harmony, Gail Eltgroth, Team Coordinator Region 10



### **Communications Coordinator – Regional Appointment – term begins even years**

Receives communications from the International organization and disperses to the region

Maintains internal communication channels among the region, chapters, and individual members

In consultation with the RMT, prepares and submits year-end Team Report to the Meetings and Corporate Services Department at International Headquarters by established deadline

In consultation with the RMT, prepares and submits summary of Annual Regional Report to the Meetings & Corporate Services Department at International Headquarters by established deadline

Supervises production of regional newsletter 3 times annually.

Conducts Chapter Visits as requested by Education Coordinator

### **Directors Coordinator – Elected – term begins odd years**

Represents the interests of regional directors on the Regional Management Team

Communicates with directors in her region to assess their needs

Communicates directors' needs and the needs of their chapters to the Education Coordinator

Provides and facilitates a forum for directors at regional events

Conducts Chapter Visits as requested by Education Coordinator

### **Education Coordinator – International Appointment term begins even years**

Develops, coordinates, and monitors regional educational programs in conjunction with other coordinators

Plans curriculum for educational events such as seminars and workshops

Works in coordination with Events and Marketing Coordinators on marketing events

Coordinates regional faculty visits to choruses

Maintains five-year education plan document

Implements the chapter revitalization plan for maintaining the integrity of the musical product and administrative process as outlined in the RMT Handbook

Approves chapters and prospective chapters for public performance

Auditions for approval Chapter-at-Large quartets for public performance

Develops faculty or staff to assist in implementing regional educational programs

Appoints an Arrangers Coordinator who administers the program that offers training for aspiring arrangers within the region

Appoints a YWIH Coordinator to educate and inform the musical leaders in each chorus about the YWIH program

Appoints a DCP Coordinator who administers the program within the region

### **Events Coordinator – Regional Appointment – term begins odd years**

Facilitates the securing of appropriate venues for regional programs and events, including site inspections and negotiation of contracts

Coordinates on-site arrangements for all regional meetings and events, including regional competitions

Serves as or oversees the work of the Chair of the Regional Convention (CRC) as defined in the Guidelines for Regional Convention

Works in coordination with the Marketing and Education Coordinators on marketing events

Oversees registrations for all regional events

Conducts Chapter Visits as requested by Education Coordinator

### **Finance Coordinator – Regional Appointment – term begins odd years**

Ensures that all financial resources of the region are accounted for in an effective and efficient manner

Coordinates the long-range financial plan in conjunction with other team coordinators

Prepares and submits the annual budget for the region

Manages bank accounts and investments and keeps accurate and current records of all financial transactions

Receives all funds paid to the region and issues all payments

Negotiates contracts for equipment and services required by the region

Holds sole authority to sign contracts on behalf of the region

Coordinates projects to raise non-dues income

Presents a report on the region's financial condition at meetings of the RMT

Prepares an annual financial statement for submission to the Director of Finance and Administration at International Headquarters

Submits accounting records for audit at the close of the fiscal year to a qualified person (or persons) selected by the RMT or for examination or audit at any time as directed by the RMT

Files Annual 990 tax form (United States regions) with the Internal Revenue Service by September 15 for the preceding year ending April 30

Provides advice and training to chapter treasurers and serves as a resource to chapters with financial questions

Provides financial information necessary to complete application for corporate gifts/grants

Conducts Chapter Visits as requested by Education Coordinator



### **Marketing Coordinator – Regional Appointment – term begins odd years**

Develops and provides marketing and public relations programs that promote chapter and regional events, and membership growth and retention

Plans and implements marketing and public relations programs to increase membership growth and retention

Designs and implements plans to market events and products

Works in coordination with the Membership Coordinator on membership growth and retention plans

Works in coordination with the Events and Education Coordinators on marketing events

Works in coordination with the Communications Coordinator on Web site and database design, implementation, and maintenance

Maintains a complete record of regional meetings and activities

Maintains database of media contacts

Writes and distributes press releases and produces media kits

Invites media to regional events and serves as onsite media contact

Initiates media opportunities including on-air interviews and feature stories

Maintains database of advertising contacts

Designs, negotiates, and buys advertising in local media

Sells advertisements in regional publications

Conducts Chapter Visits as requested by Education Coordinator

### **Membership Coordinator-term begins even years**

Elected by Region 10 Chapters & Chapter at Large (CAL) Members

Represents the interests of chapter management and membership on the Regional Management Team

Communicates president/team leader and chapter needs and issues to the Regional Management Team

Provides and facilitates a forum for presidents/team leaders at regional events

Instills in the members of her region an awareness of their relationship to the organization, to the region, and to other choruses

Develops a plan, in conjunction with the Education Coordinator, to teach chapters in revitalization ways to attract new members and retain existing ones

Plans and implements programs in the area of membership growth and retention

Works in coordination with Marketing Coordinator on membership growth and retention plans

Visits and maintains regular contact with chartered chapters to promote membership growth and retention programs

Guides prospective chapters through the Steps Toward Chartering program

Assists chapters in revitalization with growth and retention programs

Develops support staff to assist in planning and implementing programs such as

Steps Toward Chartering

Membership Recruitment

Membership retention

Chapters in Revitalization

Appoints a Chapter-at-Large Coordinator to ensure CAL members' awareness of and inclusion in regional events, programs, and publications

Appoints a Chapter Coordinator to maintain regular contact with chapter presidents/team leaders to assess and communicate chapter needs to the Membership Coordinator

Conducts Chapter Visits as requested by Education Coordinator

### **Team Coordinator - Regional Appointment – term begins even years**

Facilitates meetings of the Regional Management Team

Coordinates agenda for Regional Management Team meetings with input from members

Reviews and approves all chapter standing rules

Reviews regional standing rules and job descriptions, and makes recommendations for necessary revisions

Maintains the region's long-range plan document

Maintains the regional calendar

Develops a support staff to assist in implementing responsibilities such as

Chapter standing rules review

Regional calendar

Is responsible for recording and preparing minutes of all meetings of the regional management team

Distributes copies of minutes to members of the team, regional chapters, and the Meetings and Corporate Services Department at International Headquarters



# sweet Adeline Extraordinaire

**DiAnne Ramsbacher-Ross - A Cappella Unlimited**

**Dona Dice - Alamo Metro**

**Donna Seymour - Austin Harmony**

**Molly Manson - Baton Rouge**

**Karen Bernard - Bayou Blend**

**Patsy Thomas - Brazos Crossing**

**Elizabeth Graves - Chisholm Trail**

**Jane Vaucher - Cradle of Texas**

**Kitty Warner - Crescent City Sound**

**Hazel Knipp - Fiesta City**

**Kay Awtrey - Heart of the Pines**

**Patricia Rico - Houston Horizon**

**Bonnie Schuler - Lone Star**

**Joan Felton - Magic Valley**

**Nadine Havard - Piney Hills Harmony**

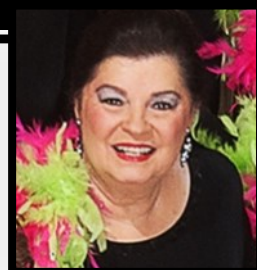
**Nancy Blackwell - Southern Acappella Sound**

**Darline LeJeune - Spirit of Southeast Texas**

**Patricia Alleman - Texas Harmony**

**Karla Fenton - The Woodlands Show Chorus**

**Beverly Warren - Prospective Heart of Dallas**



## From the History Department

I know that it's early but I want to give everyone the information about **Scrapbook Pages** & the **Twenty-first Annual Wall of Fame**.

Packets containing pertinent information for each chorus historian and chorus president/team leader will be given out at the January Regional Meeting. Any packets not picked up will be mailed to chorus presidents/team leaders for distribution. I encourage all choruses to honor one special member for the "Year 2014" Wall of Fame and to submit an entry in the Regional Scrapbook Contest for 2013-2014.

Be sure to visit the Historian's table(s) at regional meetings and at contest. You'll find chorus & quartet photos for sale at very reasonable prices. Some Region 10 scrapbooks are on display, as well as the Region's Chorus and Quartet Albums and the Heavenly Chorus Album.

If you have any questions, my contact information is:

(home address) 841 Hwy 182;  
Sunset LA 70584.

My phone number, fax & e-mail address follow: (h) 337-662-3247; (fax) 337-662-2274; (e-mail) kbsings@centurytel.net

## THANK YOU

**A HUGE thanks to Janie Macchiaroli for her assistance in editing to get this edition ready. You have my immeasurable gratitude.**

**Kerri**



Laugh

grace

sing

together

Saturday, January 18, 2014

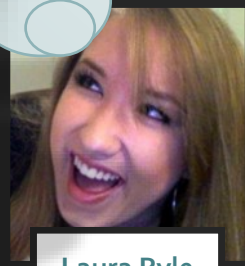
# Young Women In Harmony Quartet Contest

Must be 25 or under

## CASH PRIZES

at the Great Gulf Coast Region 10 Winter Regional Meeting  
For more information, contact Laura Pyle - [region10ywih@gmail.com](mailto:region10ywih@gmail.com)

Sweet Adelines International is a highly respected world wide organization of women singers committed to advancing the musical art form of barbershop harmony through education and performance.  
[www.region10sai.org/ywih](http://www.region10sai.org/ywih) - [www.facebook.com/region10ywih](http://www.facebook.com/region10ywih)



Laura Pyle



Grace Notes

[www.facebook.com/region10ywih](http://www.facebook.com/region10ywih)

[region10ywih@gmail.com](mailto:region10ywih@gmail.com)

[www.region10sai.org/ywih](http://www.region10sai.org/ywih)







## Bowling for Barbershop Wrap-Up • September 16, 2013

Dear Bowling for Barbershop participants,

The first Sweet Adelines International Bowling for Barbershop peer-to-peer fundraising and awareness campaign culminated on Saturday, August 31, 2013.

Thank you to everyone who participated, and to all the donors who generously gave a combined total of **\$91,563!**

Chapters and quartets had a blast at bowling events, singing in bowling centers and connecting with and cultivating donors!

### Fun Facts

- International HQ staff and the International Board of Directors raised \$9,007.10 for Sweet Adelines International (some Board members went on to raise money for their chapters, as well).
- 48 chapters/quartets participated in Bowling for Barbershop — of those, five were quartets, one was a prospective chorus and there were several small and midsize choruses. There were 891 individual participants and 192 teams.
- 21 of the participating choruses raised more than \$1,000.
- The majority of the participants held a bowling event within the community that involved bowling and singing — most had at least the bowling time donated, many had cake and pizza also donated.
- One non-U.S. chapter was represented in the campaign.
- The average amount of funds that the chapters/quartets raised was \$1,908.
- Preliminary reports suggest that most every one who participated remarked that the campaign was easy and fun, and a great way to raise money for chapters/quartets and International.
- Preliminary reports suggest that two members have been added as a direct result of Bowling for Barbershop events, and many prospective members have been contacted as a result of the campaign.
- Typically, in first year nonprofit peer-to-peer fundraising campaigns, 99 percent of nonprofit organizations report making 80 percent or less of its goal — which is considered successful. Sweet Adelines International made nearly 92 percent of its goal in FOUR MONTHS! Imagine what we could do in the future?!

We want to hear from you! If you participated in the campaign, give us your feedback. We are looking for answers to the following questions.

1. What was the biggest challenge? What surprised you the most? What would you do differently? Did you consider the event a team building exercise? Did you gain awareness? Did your chapter/quartet collect in-kind donations to use as prizes? Tell us about the bowling event. Tell us everything.
2. What will your chorus do with the funds it raised?
3. What would you change about the campaign?
4. If your chorus/quartet participated, would you participate again next year? Why or why not?
5. Did you use the Bowling for Barbershop Toolbox and Toolkit in the Members Only Marketing Center?

We want to hear from you! Send your answers, suggestions and thoughts to Joey Mechelle Stenner at [joey@sweetadelineintl.org](mailto:joey@sweetadelineintl.org). Don't forget to check out our very generous sponsors! Be sure to watch the October and January issues of The Pitch Pipe for exciting reports and lots of photos. You can also visit our Facebook page to see photos from bowling events nationwide! Again, thank you for your participation and support of this very exciting International campaign!

In harmony,

Joey Mechelle Stenner

Director of Communications, Sweet Adelines International

Several Region 10 Chorus's and Quartet's participated. You can see a list of participants on this page:

<http://bowlathon.sweetadelineintl.org/adelines/>



## A Cappella Unlimited Chorus by Kathy Pillmore

We're so glad that fall has finally arrived with cool temperatures in the 90's!! A Cappella Unlimited had an Au-some summer. After a successful show in June at Dick's Classic Car Garage & Museum, our members (together with the guys from A Cappella Texas) gathered in our state's lovely Capitol rotunda on Barbershop Appreciation Day (July 13) and rang some chords for Capitol visitors. Afterward we took a break from rehearsals for a couple of weeks. Also in July, our directors and a few of our members attended the Texas Choral Directors Association Convention in San Antonio to share our barbershop heritage, promote Young Women in Harmony (and perhaps recruit some singers/believers.)

In August we got back to business preparing for Vocal Music

Camp in September—our take on the Global Open House. We offered four classes of vocal instruction at Texas State University. Our outstanding directing duo started teaching the first class on the 2nd Monday in September and ended with a "performance" by our guests and members on September 30th.

On September 8, we participated in the 11th annual United We Sing concert that is sponsored by the Heart of Texas (BHS) chorus and the Texas State University College of Fine Arts. This annual event draws together barbershoppers, choral groups, and individuals to celebrate our great country and our freedom. On September 20 and 21 we took 17 of our members plus Grant to the Fall Regional Workshop in Houston. (Because

Grant is a male, he is unable to join SAI even as an associate member, a situation that we hope will change.) We were proud to have been awarded the Mission Belles Attendance Award for having the highest percentage of our members in attendance.

Speaking of members...we are proud to welcome our newest member Karilee Smith, a 16-year old junior at Steele High School in Cibolo, Texas. Karilee sings in the school choir and is a member of Mixed Company (a chorus of high school students from the Schertz-Cibolo-Universal City ISD.) She also plays on the Steele Varsity Golf Team and lettered as a sophomore.

Au is now a member of the Texas State University Friends of Fine Arts & Communication as well as the San Marcos Chamber of Commerce.

Rolling into winter, Au is preparing for a busy holiday season as a for-hire chorus for 5 Christmas parties and other holiday functions. And, as always, we're looking forward to competition in the Spring of 2014.



Au @ the Capitol

## Alamo Metro Chorus by Lisa Deiser

light with Santa and Mrs. Claus, the children and their families really enjoyed the show. In August, we participated in the SAI "Bowling for Barbershop" fundraiser.

We had a great time choosing team names and designing bowling "costumes". And when the dust settled, we came in 8th place overall!!!

In late September, many of us journeyed to Houston to attend the Fall

Regional Meeting. The classes were awesome and the Saturday night show was fantastic! We thoroughly enjoyed a coaching session with the fabulous Betty Clipman the following week. And in October, we will perform on the "Blue Hawaii and Barbershop" show to help raise money for the three International-bound Region 10 quartets.

Lastly, AMC will have our annual show on November 23rd, which will be a celebration of our Silver Anni-

versary! It hardly seems possible that our chorus is 25 years old! We would love to see all of you there!

Best of luck to all the International competitors: 5 O'Clock Somewhere, Soundwise, Essence and the Houston Horizon Chorus. Break all your lips and we will be cheering from the mainland! Aloha!



AMC: Ronald McDonald House

Alamo Metro Chorus has enjoyed a fun and busy summer season! We were honored to perform at the Ronald McDonald House for their "Christmas in July" celebration. Although we had to share the spot-

## Austin Harmony Chorus by Kathleen Leary



Kathleen & Kate @ BFB

"Strike One!"  
"Strike Two!"  
"Strike Three!"  
Hooray? Absolutely! Why? Because these words reverberated on July 14 in the Austin Harmony Bowl-AH!-Thon, our contribution to the global SAI fundraiser "Bowling for Barbershop". The energy

permeated the bowling lanes as Dazed and Dizzy, Holy Bowlers and the other chorus teams en-

gaged in fun and frolic backed by the generous financial support of family and friends. We are also grateful to Linda Holt, our Marketing Coordinator, who was instrumental in getting our picture and event published in the Austin Statesman newspaper.

The hoorays continued in August when we welcomed baritones Debbie Dodd and Michelle Vanecek to our chorus. Both are experienced Sweet Adelines who have recently transferred from Top of the Peak and Velvet Hills choruses in Colorado and Texas Tradition and Texas Star choruses, respectively.

September was an exciting month. Our Sweet Adeline Extraordinaire this year is Donna Seymour who has tirelessly offered her time and talent to enhance the quality and, yes, quantity of our chorus. In addition, we conducted our "Guest Night" on Sept. 30 to introduce curious folks to the wonderful Sweet Adeline experience.

Boosted by the terrific presentations from this year's Regional Area Schools and workshops, we look forward to implementing the new sound and visual techniques to enhance our performance when we join with the men's chorus A Cappella Texas for a Lone-

Star-flavored Christmas show. In addition, we will offer our gift of song while strolling along the brightly decorated streets of downtown Austin, singing carols in the shopping mall, and engaging in festivities at restaurants or luncheons. In anticipation of this upcoming magical season, we wish everyone peaceful and joyful holidays!



Nancy's BFB team



**TROUBLE IN TOYLAND**  
Presented by  
**Bayou Blend Chorus**  
December 7th  
4 PM & 7 PM  
**Sliman Theater**  
129 E. Main Street  
New Iberia, La  
Tickets - \$10.00  
For Tickets Call:  
337-519-4006

Azalea City Harmony  
Sweet Adelines International  
Presents  
**CHRISTMAS COUNTDOWN**  
Saturday, November 23  
7:00 p.m.  
Davidson High School  
Auditorium  
**Ticket Prices**  
Adults - \$10  
Children 5-12 - \$5  
Featuring local guest performers  
[www.azaleacityharmony.com](http://www.azaleacityharmony.com)

Click on each flyer for  
a direct link to the  
chorus website.



## Azalea City Harmony Chorus *by Torri Necaïse*

Hello from Mobile, Alabama! Several members of the chorus attended the Baton Rouge Area School and had a fabulous time! It was great getting to sing and to share fellowship with our Region 10 singing sisters.

We have had the pleasure of singing locally for Little Sisters of the Poor, University Oaks, and the City of Daphne's Senior Group. Also, we had the privilege of singing the National Anthem for the second time this season for Mobile's baseball

team, the BayBears.

Our annual "Cookies and Carols" was held on August 27 and was a smashing success with 5 visitors attending. This membership drive entails inviting ladies to come and visit to learn Christmas songs with us and sing them on our Christmas show and our Christmas performances. It is an evening filled with singing, friendship and, of course, COOKIES!!!

Our annual Christmas show is scheduled for November

23 and is titled "Christmas Countdown". We will be performing various Christmas songs as well as some of our current repertoire. A silent auction is scheduled for the evening as a chorus fundraiser.

It is a super busy but festive and fun time of year!



**Azalea City Harmony**



**Baton Rouge Guest Night**

HOP to it! We've adopted the "HOP to It!" slogan for our chorus this year and we have been HOPping busy! Baton Rouge Chorus hosted one of the two Region 10 area schools in June and we had impressive attendance! It was so good to see members from two of the new choruses to our region: Azalea City Harmony

## Baton Rouge Chorus *by Emily Wascome*

Chorus from the Mobile area and Southern A Cappella Sound Chorus from Monroe. Vickie Dennis and Darlene Rogers led the singing and, of course, there was also great food and fellowship.

Our director, Cate McRitchie, was able to attend the Side By Side Director's seminar held in California this past July. Cate came back motivated and inspired with loads of information to share about Sweet Adelines.

We were lucky to have Vickie Dennis come back to coach our chorus in July after winning her

services at the regional silent auction. She is one talented lady.

In conjunction with International's effort for a global guest night in September, we held a guest night and reunion of sorts on the 17th. Our hope was not only to promote the chorus to interested potential new members, but also to coax some former members to try us again. We had three guests who said they want to come back so we consider the event to be a success!

Baton Rouge Chorus will be having a Christmas show on Sunday, December 1st at 2:00pm. It will be called "Where's Santa?" along the lines of Where's Waldo. Santa goes missing but is spotted all over town! Tickets are only \$10 and children get in free with a donation of canned goods for the Food Bank. Photos with Santa will be offered before and after the show. We hope to attract an audience of young parents this way. HOPE to see you there!

## Bayou Blend Chorus *by Karen Bernard*

Hello again from Cajun Country & Bayou Blend Chorus! Doris, Kate, Marsha, Susan & Karen attended the Fall Regional Meeting. What a wonderful weekend with Gail Jencik! Our own Marsha Bock, Region 10's Chapter Coordinator, did a beautiful job on her Sweet Adeline Extraordinaire display. Bayou Blend's selection was Karen Bernard. She was totally surprised & so proud to be honored!

Ten guests came to Bayou Blend's September 3rd Global Open House. We used yard signs, post cards, personal contact, emails, radio station and newspaper PSAs with pictures to advertise the event. Marisa and

Sherri did a fantastic job on KATC-TV's Good Morning Acadiana!

The chorus sang on September 8th at a Patriotic Concert commemorating the 12th anniversary of 911. All veterans and first responders were recognized at the concert held at St. Peter's Catholic Church in New Iberia. It was a moving experience for all who attended. Our picture was in

The Daily Iberian along with an article about the concert.

Bayou Blend's first coaching session with Darlene Rogers was on September 28th & we're anxiously awaiting her second session in November. Also coming up in November will be a performance at a Veterans Memorial on the 14th.



**Bayou Blend: Global Open House**

We're preparing, along with our Christmas Chorus guests, for TROUBLE IN TOYLAND (see our show flyer elsewhere in this issue) on Saturday, December 7th. Shows at 4 PM &

7 PM are on the agenda in New Iberia at the Sliman Theater (site of previous Bayou Blend shows). Everyone is always invited to our afterglow after the 7 PM show. Come on over to New Iberia and you'll be treated to a "toyful" evening of songs & skits.

Sadly, no one from our chorus will be in Hawaii but we'll be watching the webcast and cheering loudly for Houston Horizon, 5 O'Clock Somewhere, SoundWise, and Essence. We're so proud to have all of you representing Region 10!

Until next time... at the January Regional Meeting....

## Chisholm Trail Chorus by Catherine Gowan



Temple Area School



Temple Area School



Chisholm Trail: Fall Regional Meeting

Chisholm Trail Chorus has had a busy few months since contest. In May we met with Cheryl Pyle who guided us to our new "5 year plan" with appropriate goals. We had our Board installation with Liz Graves continuing as Board President for the next year. We are excited to see Region 10 "Plus one" in action: Maria Hudkins, a rookie member who joined the chorus in March 2013, received her "plus one" pin by bringing in a new member in May.

On June 28 we hosted the Area school at our home practice site in the Cultural Activities Center in Temple. This is a great facility and was well received by all in attendance. Thanks to our leaders Carol Scherer and Sheri Strawther, with Ronda Perez, Janet Burnett, Kerri Mauney and 93 Region 10 members in attendance. A great big "Thank You!" to our chorus hostesses who provided such great

snacks for those in attendance: Kathleen, Nancy, and Kaye.

July saw us singing at Stoneybrook Retirement facility in Belton. We also hosted an open house during the month of July on Thursday nights and on July 25. Danny Dunn, the Mayor of Temple, came by and issued a proclamation making July "Sweet Adelines International Month" in Temple. We had several visitors and enjoyed watermelon and cookies after rehearsal. And then in August, we sang at Cornerstone Gardens, Weston Inn Health Center, and then traveled to the Temple VA Hospital and performed for our veterans. A quote from the letter received from the activities coordinator at the VA Hospital: "The songs were up-to-date and the veterans have related to me how much they enjoyed their time with your group."

Chorus member Kaye Pledge has agreed to head the Region 10

Young Singers Foundation (YSF) project. She is excited about raising funds for the Sweet Adelines International YSF, which promotes singing through education for both boys and girls.

And a big "thank you" to Darlene Rogers for coaching our leads in August and the baris in October. September 20-21 was a great weekend as 17 members attended Fall Regional with emphasis on "Visual Focus" by Gail Jencik. Wasn't that something? Who knew we could ALL choreograph! Our focus now is on our Fall Show which will be presented at the Cultural Activities Center ([www.cacarts.org](http://www.cacarts.org)) on November 23, and then on to the Salado Stroll and Christmas sing-outs.

## Cradle of Texas by Jane Vaucher

We performed the National Anthem on a very hot evening in June at minor league Sugar Land Skeeters' baseball game in the beautiful new Constellation Field stadium. It was great fun and, as you can see, some chorus members made a new friend of Moe, one of the Skeeters' Mascots!

We also sang the National Anthem for Houston's newest professional team - the Houston Aces Ladies Soccer team who have had a very successful season. They saw us on YouTube and invited us because we are

female and local talent. Social media works!

We just performed at the First Annual Rosenberg "Tour the Arts", showcasing barbershop with a lively medley of some of our repertoire. Our bright green color livened up the gray skies. If you attended the Fall Regional Meeting in Houston the same weekend, you might remember the very wet weather!

The chorus has been very appreciative of private vocal instruction with our own member Lynn Asher, who is a trained

vocal coach. Thank you, Lynn, as we have greatly benefitted from your time and efforts.

We welcome our newest member, Cindy Schreiner, who moved recently to Texas. She sang before with 'Show Me Sound Chorus' based in Sedalia, MO, which was in Region 7 at that time. We are so happy to have her with us.

We have had a great response to our 'Come and Sing with us at Christmas' campaign. It is wonderful to see so many new faces rehearsing our Christmas

repertoire for upcoming holiday



Cradle of Texas: w/ Moe



Cradle of Texas



Kitty Warner

## Crescent City Sound by Holly DiDomenico

Hello dear Region 10 family from New Orleans! We are busy working on preparing for our annual show which will be on October 12th at 6 pm. We will use a new venue this year, the Academy of Sacred Heart's Nims Fine Arts Center, 4301 St. Charles Ave, New Orleans. The title of our show is "Disorder in the Court, Big Easy Style" and it will be lots of fun for us and our audience.

We selected our wonderful Team Leader, Kitty Warner, as this year's Sweet Adelines Extraordinaire. Kitty Warner has been a

member of Sweet Adelines International for over 40 years and she has served as President/Team Leader, Communications Coordinator, Show Chairman, Membership Chairman, and has served on the Region 10 Board of Directors. On the International level, she served as Region 10's International Extension Representative.

Kitty has sung with three registered quartets and competed at the regional level four times. She currently writes the show scripts for CCSC and sings in our small group "Just for Fun". Congratulations,

Kitty, for all your years of dedication and for many more.

We have also added 3 new members in the past few months. Welcome to Beth Sacco and Gail Mast as new basses and Rebecca Emel as tenor.

Left to right: Sally Gagnon, Membership; Sue Englebert, Membership Chair; Rebecca Emel; Gail Mast; and Holly DiDomenico, Membership. Beth Sacco was in an earlier picture.



Left to right: Sally Gagnon, Membership; Sue Englebert, Membership Chair; Rebecca Emel; Gail Mast; and Holly DiDomenico, Membership.



## Fiesta Texas by Betsy Billinger

Hello from Fiesta City Chorus! We were invited to sing at the Folk Life Festival again this summer. It is always fun to see old friends and to make new ones.

This year we decided to put on a Christmas musical. So the great minds of the script committee got together in September and put together a saga of a humble department store on Christmas Eve day. We have started learning new music and, of course, brushing up on the traditional carols for a sing-along with the audience. The

entire chorus is gathering props and costumes. And we are planning on having a blast!

We will sing at the annual Gathering of Angels for the volunteers at the medical center at Lackland AFB, and we have started receiving requests for the chorus to perform during the holiday season. We are going to be busy the next couple of months!! We would love to see you at our musical, so if you are in San Antonio the 14th or 15th of December, let us know!



Fiesta City performing under the direction of Sally Wiskemann

## Heart of the Pines by Lorna Laster

Heart of the Pines' biggest excitement is the recent coaching we received from Kim Wonders of Nashville, TN. We had a full day of vertical singing, diphthongs, bubbling, blending, and actually ringing some chords. Wow!! This young chorus is really starting to understand what this barbershop style is all about.

Our most recent performances include a luncheon for an area counties craft exhibit hosted by Nacogdoches

County on July 15; and on August 16, a "Spirit of '45" celebration of the end of WWII that was hosted by a local funeral home - in memory of those lost and in celebration of those who came home.

Farm Road Sophisticates, one of our two chapter quartets, has recently changed personnel, and parts they sing, and felt a new name was in order, too. So...Red Heart Mamas was fortunate to be organized in time for

Kim's coaching weekend. What a way to start a quartet! Members are Loraine Young, TJ Reed, Becky Crawford, and Robin Moore.

Now we all have the tools to make our upcoming show something to be proud of. HOP presented "Divas Revvin' Up" on October 12 in Nacogdoches with our special guests, 5 O'clock Somewhere. A great time was had by all!

## Houston Horizon by Becky Autry

Aloha, Region 10! Houston Horizon is counting down the moments until Hawaii! We are so honored and excited to be representing Region 10 at International this year, and we're thrilled to be performing "Joe Liles' Greatest Hits"! We want to offer a big mahalo nui loa to all y'all who have given your friendship, love, and support to us on our way to Honolulu. Our performance at the fall regional meeting

was met with the true Aloha spirit.

In preparation for competition and beyond, we have been active in our VIP, QAP, PVI, and POD programs. Countless HHC members have gone out of their way, shared their talents, and given countless hours to help these programs succeed so we can be at our very best! Our retreat with Sharon Babb, coaching with

"Awesome" Joe Connelly and with Darlene Rogers has kept our voices up, eyes shining, and toes dancing!

Even as focused as we are on Hawaii, we have had a wonderful time inviting women into HHC to sing in our Christmas show this year, and in September, a performance at Houston's Hobby Center before TUTS' showing of Priscilla!

In Memory



## OPAL STRAWTHER

SPIRIT OF SOUTHEAST TEXAS CHORUS

In memory of Opal Strawther, who passed from our sight on July 24, 2013 at the age of 88 years. Opal was a member of the Greater Sabine Chorus and Spirit of Southeast Texas Chorus for 28 years. Opal had two daughters that were/are also involved in Sweet Adelines for many years. Her daughter, Karen, was director of the Greater Sabine Chorus and the baritone in regional champion quartets Pazazz Unlimited and Calypso. Her daughter-in-law, Sheri, is the current director of the Spirit of Southeast Texas Chorus, as well as being the lead in the regional champion quartet 5 O'clock Somewhere and a member of the International Judging Program in Sound. Opal loved her Lord, her family, and her Dallas Mavericks. She also loved her Sweet Adelines family very much and they loved her. They showed their love by singing How We Sang Today at her funeral and Battle Hymn of the Republic at graveside. It was awesome! The crowd loved it and so did she!! She will be greatly missed!!



## VIRGINIA SIMONEAUX

BATON ROUGE CHORUS

Virginia Simoneaux had been a Sweet Adeline since 1981. Her deep, resonant bass voice added depth to chorus singing for decades. Her expertise was shared with the chours in a variety of offices she held over the years. Her great voice and helpful attitude was surpassed only by her culinary skills. She baked cakes and coordinated planning and production of food for a wide variety of chorus events from snacks to lunch to High Tea. We will never forget her Madame Firefly skits, complete with tutu costume and magic wand. Her Cajun jokes and accent were hilarious! We miss her deeply.



## MARY LYNN HUNT, HOUSTON HORIZON CHORUS

Houston Horizon Chorus lost a great lady in 2013. Mary Lynn Hunt joined Sweet Adelines in 1963. She was a long time member of the Port of Harmony Chorus and a Charter Member of Houston Horizon Chorus. Mary Lynn became a Member Emeritus of Houston Horizon Chorus after she was not able to perform with us any longer. She sang in many quartets, including (but not limited too), "The Tune Samplers" quartet with her daughter Kathy and "Young At Heart" quartet. Mary Lynn held most chorus jobs/titles at one time or another in her Sweet Adeline Career, except for President. She attended the first SAI International Chorus Contest as a member of the Port of Harmony Chorus. She was a wonderful member and is truly missed.





## Lone Star by Bonnie Schuler

### Lone Star Chorus Is BATTY!

Two decades ago, 3 choruses decided to pool their resources and talent to form LSC. Our celebrations this fall included a Barbershop Bash on Saturday, October 5, with our Lone Star alums, friends, and family with lots of good fellowship, delicious food, and delightful ringing of chords.

In addition to the festivities of the Barbershop Bash, we raised funds to benefit the National Niemann-Pick Disease Foundation (NNPDF). The organization supports and promotes research to find treatments and a cure for all types of NPD and provides support services for individuals and families affected by this incurable children's disease. Several years ago, the chorus performed at NNPDF's national conven-

tion in Arlington. With a member whose family has been impacted by this disease, it is a very personal cause for our members to support.

In the words of member Rose Bitter, "There is 'Something' about getting together to sing with LSC. It makes me wish I could 'Harmonize the World.'" When director Becky Loveday pulled out some older repertoire songs, and we looked at them for the first time, I'll admit it seemed like "Mass Confusion." Then "That Old Black Magic" took over and voila, "Everything Old Is New Again." So, we're taking a "Sentimental Journey," feeling the "San Francisco Bay Blues" and after every Monday rehearsal... we say "How We Sang Today!"

## Piney Hills by Sallie Rose Hollis

### Piney Hills Harmony rocks, sings carols, and plays host

Piney Hills Harmony Chorus successfully completed its annual show in August, will sing on a Christmas show at an area church in December, and at the moment is happily hosting eight prospective members.

The chorus presented an expanded reprise of its 2012 "Rock Around the Clock" show on Aug. 24 at the Jack Howard

Theater in Monroe. The show featured '50s, '60s and '70s songs. More than 750 people attended. In addition, comedy skits by chorus members and emcee Kelly Aaen (president Carol Ogle's speech-and-drama-teacher daughter) added to the fun with characters from "I Love Lucy," the "Laugh In" TV show joke wall, Edith Bunker from "All in the Family" and more.

The event, sponsored by Care Solutions and Vantage Health Plan, was a benefit for Angel

Ministries, a non-profit organization that cares for those unable to care for themselves and also teaches them to help themselves. Special guest performer was Elvis tribute artist, Todd C. Martin.

December will find the chorus at the White's Ferry Road Church of Christ in West Monroe, performing on "O Holy Night." Other performers will include musicians from the church and the quartets 4 His Glory, Grace Notes, and Bayou Blend.

Looking even more toward the future, two new members joined just in time for the rock 'n' roll show, and eight prospective members are currently attending rehearsals. The attendees include three mother-daughter sets.

Eight members of the chorus enjoyed attending the Fall Regional Meeting.

## Our newest members



Alice Porter-Bayou Blend  
Karilee Smith-Acapella Unlimited  
Debbie Dodd-Austin Harmony  
Michelle Vanecek-Austin Harmony  
Maria Hudkins-Chisholm Trail  
Cindy Schreiner-Cradle of Texas

Lynn Asher-Cradle of Texas  
Beth Sacco-Crescent City Sound  
Gail Mast-Crescent City Sound  
Rebecca Emel-Crescent City Sound  
Kay Carr-Texas Harmony  
Amanda Thompson-Texas Harmony

## Prospective Heart of Dallas by Sandy Hanne

What the heck is a Heart of Dallas? You may not know us because we are so small, so far away from events in Houston, and so busy trying to re-charter since 2007. But yes, there really is a prospective chorus in Richardson, and has been since 2002. We haven't checked in because there hasn't been much to report. After many years of slogging it, trying insanely hard to get our number of members

back up, it looks like the drought is finally breaking. When our last guest clears her finances and has passed her audition, we will be at 14 members, and guests seem to be more frequent these days.

Given that we came from a low point of five members two years ago, we are pretty relieved. And we had eight people at the last Regional Meeting, enjoying tag singing

into the wee hours (ask us any time!). Now that the new members really understand what Sweet Adelines is about (and not just our chorus), we hope greater attendance at events will be a more regular thing.

We plan to be onstage at regional contest for evaluation just to get our feet wet, even though there is little chance of chartering by then. We were so inspired by Voice

of Vermillion and Panther City last spring, getting onstage with only eight and nine members respectively!

We had so much fun at the Fall Regional Meeting (thanks for trading pins, everyone!) that we're talking about coming back in January. Can't wait to meet you all!

## Southern Acappella Sound by Nancy Blackwell



We've had a great summer beginning at the Small Chorus Area School in Baton Rouge. Quickly following that, we were blessed to sing for the Bosco Baptist Church. And then we performed at the Monroe City Hall for the Mayor, Jamie Mayo, who read the PROCLAMATION for Sweet Adelines International Week July 21-27, 2013 in Monroe, Louisiana. (Note to other choruses who do this: always take your own camera person – and preferably a videographer. We did not and wish that we had!). August 11th found us celebrating at the "Spirit of '45 Celebration" with the residents

of the War Veterans Home as well as dignitaries from across the state. The VERY DAY AFTER a feature newspaper article came out about our president, Candice Bassett, we got the call to perform at the North LA Cotton Festival in Bastrop. We did a nearly two-hour performance with a custom script and two guest quartets (4 His Glory and Bayou Breeze). It was an incredible summer!

September 30 – Our Global Open House activity was a "come and go" event with delicious refreshments, tag singing, warm-up exercises, door prizes,

and a breathing lesson or two. We have two television spots and newspaper ads coming out to advertise. Looking forward to sharing barbershop harmony with other ladies!



SASC makes the news!

## Sparkling City by Mary Hower

It was a busy summer for the Sparkling City Chorus as we prepared for "Sing N Sizzle", a free public performance given on August 8. Women singers in the community were invited to learn two songs over six weeks and perform with the chorus. The chorus was joined by quartets Serenade and Four Shore. Members of an appreciative audience were treated to cookies and punch after the show.

We had a change up in leadership this summer as

Cesarea Germain stepped down as president and long-time member, Marge DeWitt, took over. Sharon Queller was installed as the new vice president and publicity chairman. One of her fresh ideas was having a booth at the Home and Garden Show this month, which was readily endorsed by the chorus. We got lots of publicity at this three-day event by handing out SAI brochures and informative refrigerator magnets. We also showed the Global Open House video and encouraged questions.

Twenty-five signed up to be contacted and four of them came to practice that Tuesday! We are looking for more guests in future weeks. Fall means the beginning of our Durham Pecan sales. This has been a major fund raiser for us every year since 2004. This year we're going to put stickers on the bags of nuts to remind our customers how to contact us throughout the year!



Sparkling City Home Show





*The Woodlands Show Chorus*  
2013 Regional Chorus Champions, Sweet Adelines International  
Presents  
**HARMONIZING THE HOLIDAYS**  
THURSDAY, NOVEMBER 21 • 7:30 P.M.


Enjoy the music of this award-winning chorus under the direction of Betty Clipman as well as special guest quartets including

**FIVE O'CLOCK SOMEWHERE**  
2013 Regional Quartet Champions  
— and —  
**RICOCHET**  
Members of Tidelanders

**SILENT AUCTION & BAKE SALE**


**Ticket Information:**  
Email: Tickets@TheWoodlandsShowChorus.org  
Phone: 713-688-6509  
Adults: \$20 Patrons: \$40 Seniors (62+) and Students 13-18: \$15  
Children 12 and under: FREE  
Location: Nancy Bock Center for the Performing Arts  
3800 S. Panther Creek Drive, The Woodlands, TX 77381  
(McCullough Jr. High School auditorium - parking in the rear)  
Silent Auction & Bake Sale start at 6:00 P.M. • Auditorium doors open at 7:00 P.M.






**Houston Horizon Chorus**  
**Christmas Show**  
December 12, 2013, 7:30 PM  
Grace Presbyterian Church  
10221 Ella Lee Lane, Houston, TX 77042

Questions? Go to <http://www.houstonhorizon.org>  
or call 1.877.571.4465 for more information!



Houston Horizon Chorus is sponsored in part by the City of Houston through the  houstonartsalliance

Click on each flyer for  
a direct link to the  
chorus website.

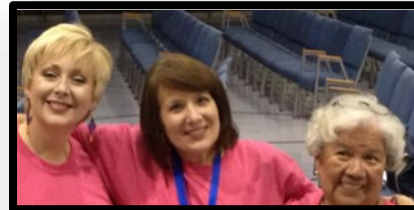
## Spirit of Southeast Texas by Debbie Keith

Spirit of Southeast Texas Chorus has had a busy and productive spring and summer. We were saddened by two events during this time. Our long-time director, Cindy King, retired in May. We had a great time at her retirement party and wish her well as she continues her journey of life. Our second event was the going home of long-time Sweet Adeline Opal Strawther. Opal was a member of the bass section and even performed with us

in July at the Trout Creek Fire Department Fourth of July celebration. We will miss her. We are so blessed to have had three applicants for the position of Director. Sheri Strawther is now our director and both other applicants (Jeana Evans and Judy Davidson) are now associate directors. What a wealth of talent!

The weekend before our Global Open House event,

we had a Harmony Workshop with Spirit. Several women attended to sing Christmas music and to learn about being a Sweet Adeline. These ladies also attended our GOH event. We are now working on new contest songs and Christmas music to sing in the community and in Jefferson, Texas.



Our new leaders! Jeana Evans, Sheri Strawther, Judy Davidson

## Texas Harmony by Mary K McDonald



Texas Harmony put together a fabulous Global Open House on September 23rd. We had eight guests attend. We had a fabulous time sharing barbershop harmony. One guest was so excited that she yelled out in the middle of rehearsal that she was our 'Newest Member'. As you can see from our picture, we placed all our guests on the front row, and they already look like Sweet Adelines. We look forward to seeing them all again on our risers.

On September 28th we sang during the opening ceremonies for the Making Strides Against Breast Can-

cer 5K in Irving, a great cause that touches us all. In November and December we start our 'Yule Tide Tour' and take our show on the road. One stop on our tour will be as guests on the Goodtime Chorus Show on December 7th.

We have two new members due to the enthusiasm of two of our members. As we all can relate, Sweet Adelines are born but, unless they land in a barbershop family, may go undiscovered for many years. Kudos to scouts, Mary Lou Spencer and Donna Saunders! Mary Lou found Kay Carr at a neighborhood block

party; Donna's ear perked up when fellow Walmart shopper, Amanda Thompson, was singing along with the piped music. Texas Harmony is enhanced by their talent, and two more women have "caught the wave"! How cool is that?!

A big warm welcome to our newest chorus members Kay Carr and Amanda Thompson.

Best wishes to all of Region 10's competing members: Houston Horizon Chorus, 5 O'clock Somewhere, SoundWise and Essence. We will be cheering for you all. Aloha!

## The Woodlands Show Chorus by Kay Hammett

We don't need exercise; we have The Woodlands Show Chorus!

As if one chorus was not enough, a group of our members have formed a smaller chorus (Daybreak). Daybreak has begun to sing in and around The Woodlands area to fulfill some of the performance requests we receive for daytime events. We just can't get enough of this marvelous craft of ours, so we are considering several more opportunities to perform over the holiday season with our somewhat smaller group of members, who have a little extra time.

Bowling for Barbershop was not only great fun, we raised quite a bit of dough and were 9th among SAI choruses. What an awesome opportunity to raise money and have fun. Our next fund-raising opportunity is a garage sale Octo-

ber 25-26, 2013, and we don't stop there - more to come! Many of their members had a blast at the Fall Regional Meeting in September and received lots of good information from the faculty, Gail Jencik. It's always fun to get together with all the other Region 10 choruses and to join together in song and, in this case, dance. Fun! Fun!

Our Open House on Monday Sept. 23 provided us the opportunity to perform a little and to give our guests a taste of a regular rehearsal. Not to mention, we got to party afterward - something we can't ever pass up.

We can now focus our attentions on our November 21st "Harmonizing the Holidays" show at the Nancy Bock Auditorium in McCullough Jr. High Auditorium. Oh yes, we will also have a bake

sale and silent auction prior to the show. Check out the information on our website, [www.thewoodlandsshowchorus.org](http://www.thewoodlandsshowchorus.org). If you want to order tickets, email Carol at [tickets@thewoodlandsshowchorus.org](mailto:tickets@thewoodlandsshowchorus.org). We would love to see all of our Region 10 sisters there!

In preparation for Baltimore, TWSC has started two new contest songs and have already been coached by Jim Arns and Renee Porzel (the amazing duo). Not only does the chorus get coaching, but Betty [Clipman] enjoys director coaching as well.

TWSC's schedule for the future is full of more coaching from the dynamic duo, retreats, PVI's, workshops, and choreo practice before regular rehearsals. So we just can't seem to stop ourselves, not that anyone has actual-

ly tried. We love every minute of the work we do and revel in making a little progress at every step of the way. It is still such a joy to have the talents of our wonderful director and all of the members who continually strive for excellence. The Woodlands Show Chorus wants to make Region 10 proud when we perform on that big international stage in Baltimore, November 2014!

BTW, have you checked out our Facebook page?





# Blue Hawaii & Barbershop



**Special Guest**  
**5 O'clock Somewhere**

*Region 10 Quartet Champion*

**Saturday, October 19, 2013**  
**7:00 p.m.**

**Ticket price: \$15**

**Paypal accepted:**

**soundwisepay@gmail.com**

**Beitel Memorial Lutheran Church**  
**2515 Austin Hwy.**  
**San Antonio, TX 78218**



**Grace Notes**  
*Region 10  
YWHA Champions*



**SoundWise**



**Essence**

*and featuring*

*2013 Sweet Adeline International  
Wild Card Contestants*

**HAWAII**  
NEXT EXIT

for more information  
[www.soundwisequartet.com](http://www.soundwisequartet.com)  
[soundwiseqrt@gmail.com](mailto:soundwiseqrt@gmail.com)  
210-655-1574 or 210-908-8375

*also featuring*  
**Award winning**  
**The Marchmen Chorus**  
**Alamo Metro Chorus**

**Hawaiian Attire  
Encouraged**



## 5 O'Clock Somewhere! Carolyn, Kerri, Pam, & Sheri

5 O'Clock Somewhere! has really been busy since our last update and will be even more busy between now and International Competition. We have been coached by some of the organization's best coaches including Betty Clipman, Janie Macchiaroli, Jim Arns, Ruth Ann Parker, and Sharon Babb with more to come in the near future. They all bring something useful for us to work on. Wahoo!! We love work.

We just had a mini retreat in Galveston thanks to one of chorus members, Janeen Osina, who let us use her house right off the seawall. During the month of October, we have three performances on the weekends so will be putting on our traveling clothes. Kerri has already started her countdown days on FB so it will be fun to watch what she comes up with. Sheri has just gotten back from a cruise, Pam is taking some vacation

days each week and Carolyn has lost her mother and gained a new great grandson all within a 15-day period.

If you're looking for something to do this coming weekend, head to San Antonio (WHOO HOO! Road Trip!) for a great show... Blue Hawaii and Barber-shop! We'd love to see you all there!

Looking forward to our time together in Hawaii and doing our best to make Region 10 proud of us.



With Jim and Renee



## Essence Caitlyn, Candice, Kerry, & Tianna



Essence

Essence is excitedly preparing for our debut performance on the International stage! We have been working diligently over the past few months with rehearsing, coaching, performing and fundraising. The summer months flew by in the blink of an eye and it's hard to believe that we will be on our way to Hawaii before we know it! In preparation for our big trip, we have enjoyed coaching with Mary Ann Wydra, Janie Macchiaroli, Marcy Scofield, Lisa

Deiser and Laura Horansky. We have been molded and crafted into a better and stronger Essence. Our rehearsals have been filled with laughter, duetting, expressive choreo and plenty of ringing chords!

Fundraising has been an important focus as well. Our fundraising projects have included a Silpada jewelry party, raffles with wonderful donated items, Essence bracelets, and beautiful sets of cards handmade

by Tianna! We even setup a PayPal account to help in our endeavors. Thank you all for your continued support and encouragement! We look forward to sharing our Hawaiian adventure with our Region 10 sisters. You can follow our updates on our Facebook page at: [www.facebook.com/EssenceQuartet](https://www.facebook.com/EssenceQuartet)

## Fourmost Bebe, Cindy, Heather, & Robin

Hello Region 10! Here we are again...Heather Harmon Garcia, Cindy Fossum, Robin Negrón and Bebe Caldwell as Fourmost quartet! In between the singing, we are all blessed with fruitful lives. Robin is a fulltime student, working toward her physician's assistant degree. Cindy continues to advance in her job and just received a handsome raise. Heather has recently landed a great job in San Antonio and loves it. Bebe embraces being a grandmother (gigi) and awaits more sweetness in the spring.

A fun time was had by all at the Fall Regional meeting. Gail Jencik's presentation was great as was our coaching session with Darlene Rogers. We enjoyed visiting with old friends and made new ones. Thank you all for your kind words, warm hugs, and singing requests. We returned to a crazy singing week; rehearsal on Monday evening, coaching with Betty Clipman on Thursday afternoon, and a performance on Saturday evening (whew and yeah!). If you're on Facebook, please visit us and "like" the page. We look forward to keeping in touch. <https://www.facebook.com/FourmostQuartet>

Our best wishes go out to Houston Horizon chorus, 5 O'Clock Somewhere, SoundWise, and Essence quartets for a great performance on the international stage in Hawaii. As the holiday season approaches, we hope you celebrate happy and healthy holidays! We'll see you in January!



Fourmost



**KCKC**

## **KCKC** Corla, Karen, Kate, & Lynda

KCKC had the privilege of singing "Friends" in New Iberia at a Patriotic Musical Tribute to 9-11. We are also members of a VLQ called The 7-Ups and sang several songs at a fundraiser for the Covenant United Methodist Church.

Singing the Star Spangled Banner for the UL Lafayette Softball Team's game with the USSSA Pride on September 29th was a first for us; we were thrilled to be able to do this performance.

We're looking forward to the upcoming holiday season and to singing in Bayou Blend's Christmas Show "Trouble in Toyland".

## **Mix & Match** Marci, Marlene, Michelle, & Rosemary

**BIG NEWS!!!** Our tenor, Marci Haack is now Mrs. Frank Weatherford. Marci tied the knot (for the first time) at her childhood home, Haack Farms in Ohio. Marci could not get hitched without first singing to her groom and who better to sing with than her very own quartet....Mix & Match. So we all traveled to Ohio and it's true....the corn IS as high as an elephant's eye! It was a lovely ceremony attended by family and some old barbershop friends including Fourth Edition Queen lead, Lee Balaguer and BHS RITZ Champ, D.J. Hiner. M & M sang "Always" and "If I Give My Heart to You" and we managed to hold it together! It wasn't easy but it was wonderful

and the groom nodded, "Yes." Really a sweet moment...

Once we all came down from Marci's "high," we got busy learning new repertoire. The new songs included two possible contest songs and a new Brian Beck arrangement of "Mr. Hooper's Find It In A Minute Book", written by Rosemary's very own jazz singer daughter, Rosana Eckert.

At the Fall Regional Meeting, we had some amazing coaching from Darlene Rogers, Vickie Dennis, and Janie Macchiaroli. That was certainly worth the drive in the torrential rainstorm. We left

feeling very good about our competition choices.

Holiday season will find us singing for several holiday parties and the BHS Good Times Chorus Christmas Show along with Texas Harmony on Saturday, Dec. 7. Come on out to Arlington at 2pm or 7pm to get into the holiday spirit.

So Mix & Match will be at the Regional Meeting in January, ready for more learning and more fun as we continue to bond and to refine our sound.

## **The other M8M..**

### **Mr. & Mrs.**



## **One Four the Road** Cindy, Gail, Lea, & Tana



One Four the Road, newly registered quartet, is currently working on an audition package for the music team at Chisholm Trail Chorus. Rehearsal schedules fluctuate as baritone, Tana, finds herself a single mom of teenagers while hubby

works 28-day shifts in Alaska. Bass, Gail, travels at least an hour each way to be at quartet practice as well as chorus rehearsals. Cindy, tenor, is just bursting with pride as she soars in her musical skills. Lea is making the switch from tenor in

previous quartet arrangements to singing lead with great confidence.

We are so excited to begin our journey together and can't wait to sing for you at a Regional event!

## Red Heart Mamas *Becky, Loraine, Robin, & TJ*

In July, 2013, a new "pinecone" sprung up in the Piney Woods of East Texas from one of Region 10's youngest choruses, Heart of the Pines, in Nacogdoches, TX. This pinecone (a.k.a. Red Heart Mamas) is really a new hybrid from crossing 3 parts novice quartet Farm Road Sophisticates

(Loraine Young: Tenor, Becky Crawford: Bari, and Robin Moore: Bass, nee Lead) and one part Shondells (Queen of Harmony, Teresa (TJ) Reed: Lead, nee Bari). Since Loraine, Becky, and Robin are total novices to barbershop, you can imagine the performance anxiety in singing in a

quartet with a long-standing Queen of Harmony! Thankfully, TJ has been the director of Heart of the Pines Chorus since Day 1, so she doesn't intimidate them – USUALLY! Red Heart Mamas was thrilled to be able to take advantage of Kim Wonders' (Master Director,

Metro Nashville Chorus, Region 4) masterful coaching on Friday, August 16, prior to Heart of the Pines' scheduled all-day coaching session that Saturday. What a "Wonders-ful" and FUN learning experience for an entire chorus, none of whose members had ever sung barbershop until joining Heart of the Pines.



## SoundWise *Denise, Jane, Janet, Melissa, & Ronda*

ALOHA!! Thank you Region 10! Your love and support mean so much to us. We are looking forward to our trip to the island and to representing you as contestant #13!

We've enjoyed working with Betty Clipman, Darlene Rogers, Mary Ann Wydra and Vickie Dennis! Thank you for your feedback, corrections and assistance as we strive to perfect our songs for Hawaii. It's great having such talent-

ed coaches in our region to work with. Thank you!!

Melissa, Jane, Ronda and I also want to give a BIG thank you to Janet for agreeing to go on this journey with us. We're having so much fun!!

Don't forget the show in San Antonio Saturday October 19, 2013.

"Blue Hawaii and Barber-shop" – Beitel Memorial Lutheran Church – 2515 Memorial Highway at Per-

rin Beitel, San Antonio, Texas 78218

It's a great reason for a "road trip"! You won't be disappointed, as all of your international quartet competitors will be performing as well as some of the local men's quartets and choruses. There will be items for raffle and sale. Maybe you can get Christmas shopping done early! ;- ) We'd LOVE to have you!!!

See you soon!!

## VocalEyes *Alice, Jodi, Karla, & Wendy*

Excited about singing and life, the members of the newly-reorganized VocalEyes have a not-so-well-known adventurous side involving sea, land and sky.

Most recently Jodi, the lead turned baritone, has taken to the sky by "jumping out of a perfectly good airplane." After a brief instructional class, Jodi boarded the plane, attached herself to her HOT tandem instructor, and propelled herself out of the plane. She has already scheduled her next jump.

Karla, the tenor, finds relaxation and beauty in the underwater world of scuba diving. Her adventures have taken her to Martinique, Cozumel, Playa Del Carmen, Curacao, and the Bahamas where she has seen spectacular coral reefs, sting rays, and sharks.

Alice, the new lead, as well as Wendy, the bass, are land-based adventurers. Having recently moved from the Rocky Mountain region of Colorado, Alice has hiked countless miles of mountain trails, fished mountain streams, whitewater rafted in the Arkansas River, as well as zip-lined in Puerto Rico. Wendy is a motorcyclist and skier. These activities helped her win the coveted Miss Biceps title at an international lady's bicep competition.

These four outdoor-adventurous ladies enjoy the indoor adventure of singing together and look forward to building their quartet skills.





Nothing but blue skies...

Area Schools

Random shots



Great Gulf Coast  
Region 10  
Sweet Adelines  
International

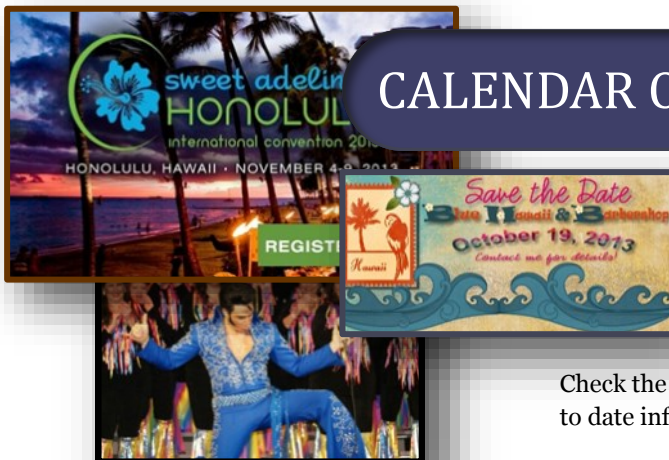
Region 10 Website:  
<http://www.region10sai.org/>

*Great Gulf Coast Region 10 provides  
opportunities to women for education,  
performance, leadership, and personal growth to  
advance 4 part a cappella singing.*



*Harmonize the World.  
Through Barbershop  
Song*

## CALENDAR OF EVENTS



Check the Regional website for up to date information about upcoming events.

### 2013

10/12—Heart of the Pines Chorus—Fall Show

10/19—SoundWise, Blue Hawaii and Barbershop—San Antonio, TX

11/5-9—International Competition—Honolulu, HI

11/21—The Woodland Show Chorus—Holiday Show

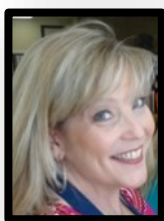
11/23—Alamo Metro Chorus—"Sing and Celebrate" - Silver Anniversary Show, San Antonio, TX

12/7—Bayou Blend Chorus—Christmas Show

### 2014

1/17-18—Quartet Workshop—Houston, TX

## Events Calendar



**Kerri Mauney —  
Editor,  
Tune in with Ten**

**17706 Placid Trails Dr.  
Tomball, TX 77377  
281-731-4518**

[reg10tiwt@gmail.com](mailto:reg10tiwt@gmail.com)

## Stay Connected with Region 10

All active and CAL members are encouraged to sign up for the Region 10 Yahoo e-group and/or our Facebook page. The e-group is our most timely method for disseminating information that is important to you—registration and flyers for area schools and contest, updated links on our regional website, this TIWT newsletter, and valuable information for your chorus leaders, directors, and quartets.

It's easy and free to join. Just send an email to [sa-region10-suscribe@yahoogroups.com](mailto:sa-region10-suscribe@yahoogroups.com) and we'll do the rest.

If you're on Facebook, find us under "Great Gulf Coast Region 10, Sweet Adelines International."

Note: We have converted from our former FB group — look for the comma in our name.

Join the discussion!

