

Winter 2014 Volume 28, Issue 3

Inside this issue:

Regional Competition Information	2
RMT Articles	6
YWIH	16
Chorus articles	17
Memorial page	22
Quartet articles	27
Events Calendar	31

Special points of interest:

- Regional contest information
- Winter Regional Meeting photos
- Marketing your chorus
- Young Women In Harmony
- In Memory
- International registration information





All contest information can be found on the Region 10 Website

**Click here for link to the
2014 Regional Contest page
of the Region 10 website**

This page on the regional website will give you access to the 2014 Region #10 Competition Handbook. The entire handbook is available in .pdf form. Individual forms and information pages are available as separate .pdf pages so you don't have to print the entire handbook if all you want is one specific page.

Region 10 Core Committee Chairs

Events Coordinator (EVC)

Marilyn Turner

Chair of the Regional Convention (CRC)

Cheryl Pyle

Competition Coordinator (CC)

Denise Fly

Official Panel Liaison (OPL)

Vicki Wyont

Secretary to Chair CRC

Jane Schlinke

Official Judging Panel

Sound

Joan Boutilier

Music

Jana Gutenson (Panel Chair)

Expression

Nancy Field

Showmanship

Sue Beck

Panel Secretary

Cammie MacKinlay



Contest connection

A few words from Denise Fly, our CC...

Hi everyone!! Can you believe that it is time for contest again!! I know you are all working hard. I'm looking forward to seeing you all again in April. As you have heard, there are many changes taking place this year. Here is more information for you.

Order of Appearance for contest will be drawn as follows:

Quartet and One Riser Configuration Chorus Competitions

Evaluation Only
International Division
Open Division

****Host chapters will still have the option to be the last contestant in their appropriate division.**

Different score sheets are used for Open Division versus International Division. Copies of the new score sheets are available in the JCDB update.

Open Division counts towards a chorus' 3-year competition requirement.

Video Open Division is also available. Video entries do NOT count toward a chorus' 3-year competition requirement.

Regions are not required to provide emcee microphones for the Open Division. You may provide standing microphones – just not required.

Regions are not required to provide anything for Open Division competitors that they do not provide for International Division competitors.

Timing for contestants is 7 minutes for Evaluation and International Division and 10 minutes for Open Division.

Open Division scores appear on the score tabulation sheet. Contestants receive letter grades with NO averaged final letter and/or score. These contestants are listed in order of appearance on the tab sheet with "OPEN." Open Division is judged on one competition song and the entertainment package. Open Division contestants are allowed to sing more than one contest song within their package, but are only evaluated on one. Judges assign the corresponding letter grade to the score.

Evaluation only scores within the International Division remain private. On the score tabulation sheet, these contestants appear after the International Division placements in order of appearance with "EVAL" – same as in the past.

Music Services created a cue sheet for the Open Division. This sheet will be sent in competitor packets and available on the website. On the cue sheet, Open Division contestants list all components of their package – songs and emcee work. They also mark which song is the contest song. Contest song information will need to be provided to the judges (ie - name of song, where song is in package). The cue sheet is due to the CC 30 days prior to contest.

Penalties for Open Division include, but are not limited to, the following:

- Competition songs not sung primarily in English. (Contestant disqualified)
- Official song of the Corporation. (Contestant disqualified)
- Religious or patriotic songs. (Disqualification; does not apply to noncompetition songs)
- Performance included spoken material and/or noise making devices. (Disqualification; does not apply to noncompetition)



Contest connection connection

songs.)

Throwing object(s) into audience or judging pit from the competition stage. (Contestant

Crowns worn by contestant. (Contestant disqualified)

Condition of stage. (Contestant disqualified)

Conduct of contestants, including director, deemed prejudicial to the welfare of the organization. (Contestant disqualification.)

Delay of contest. (Contestant disqualified)

Non-singing member, in addition to director, on stage and detracting from music product. (Contestant disqualified)

Deviation from submitted prepared program. (Contestant disqualified)

If disqualified, the contestant will not receive score sheets, they are not eligible for any awards and their performance will not count toward the chorus' 3-year requirement.

The regional competition handbook is available on the Region 10 website. There are TWO MORE FORMS that will be sent out soon that must be included in your information you mail back to me 30 DAYS BEFORE CONTEST! NOTICE this has changed from the past.

If you have any questions or need more information you may contact me.

See you at regional!!

Good luck to you all.

Chorus Order of Appearance

1. Pros. Heart of Dallas (eval only)
2. Crescent City Sound
3. Heart of the Pines
4. Texas Harmony
5. Azalea City Harmony
6. Alamo Metro
7. Spirit of Southeast Texas
8. Piney Hills Harmony
9. A Cappella Unlimited
10. Chisholm Trail
11. Cradle of Texas
12. Austin Harmony
13. Houston Horizon
14. Sparkling city
15. Southern Acappella sound
16. Magic Valley
17. The Woodlands Show Chorus

Quartet Order of Appearance

1. JazzMaTazz (eval only)
 - 2a. Vibe
2. Fourmost
3. Reflections
4. Mix & Match
5. Reunion Street
6. SoundWise
7. Rhapsody
8. Essence
9. Harmonista
10. 5 O'Clock Somewhere!
11. Head Over Heals
12. Anything Goes
13. Quadraphonics
14. A'Blast



WRM

Peggy Gram



For more pics, [click here](#)



Rappin' w/ Ronda

Nothing but Blue Skies

Happy 2014 Region 10

I hope you had an awesome Holiday Season and are busy getting ready for a new contest season. You may or may not know that the International Judges provide regions with valuable input regarding notable chorus and quartet trends observed during contest by the official panel. I have recently reviewed, again, the Judge Observation Forms from Region 10's last two regional contests and wanted to congratulate you all on the noted strengths in improving basic vocal production skills. This is something we all continue to work on every day. The following items have been identified in 2012 and 2013 as areas for continued improvement for both the choruses and quartets:

1. Barbershop blend/tone production
2. Synchronization
3. Breath management
4. Characterization
5. Resonance

The Regional Management Team and the Education Faculty prepare the coming years guest faculty according to these remarks to assist you in your educational growth. The May Leadership meeting, May 16-17, 2014 of this year will have great educators for your chapter Administrative and Musical leaders, so be sure to mark your calendar for this event. Another resource that can benefit the choruses and quartets in Region 10 is the Members Only Education Center on the Sweet Adelines International website. Recent additions include two new vodcasts: Sharon Babb's *Recognizing Resonance* and Marge Bailey's *The Eleven Chords of Barbershop*. The Education Center offers many tools for strengthening the elements of the barbershop art form identified on the 2012 and 2013 Judge Observation Forms. Please check it out often.

Also, mark your calendars for the Area Schools coming up June 21, 2014. They will be in Baton Rouge, LA and San Antonio TX. We will have a new regional song to work on (to be announced at the May Leadership meeting) and great education from our own amazing education faculty.

Can't wait to see and hear you all again at regional competition. Please let me know when your rehearsals are, as I love to come by and visit. I wish you the best now and on stage.

Keep smiling and letting your character shine through! My best to everyone!

Mission Belles Attendance Award

The Southern Acappella
Sound Chorus wins the
Mission Belles Attendance
Award at the Winter
Regional Meeting
Congratulations!



▶▶▶ Happy Members

by Carol Mouché, Membership Coordinator, Great Gulf Coast Region 10

region10mem@aol.com



Region 10 Membership Is Growing. Thanks To You!

I'm frequently asked, 'how can we get more women to just come and see/hear what Sweet Adelines has to offer them?' When I visit with chapter leaders, I remind them that there is no 'silver bullet' to this question – it's a combination of **timing** (does she have the time/money to join now?), **consistent marketing** (social media offers a lot of free avenues for this), a **good musical product** (you need to sell them something they admire and want), **follow-through** (if you meet someone in the grocery line who loves to sing, be sure to contact her later when she's not juggling a shopping cart and grandchildren) and **perseverance** (just because she can't come to your guest night this month doesn't mean she doesn't want to, so ask again. Better yet, arrange for someone in the chorus to bring her to a rehearsal – it's less intimidating than walking in alone.)

Here's some exciting news – the New Year is bringing some fresh faces through our rehearsal doors. We currently have more than 760 members in Region 10, and that number is increasing weekly as several choruses are experiencing a surge of membership auditions. For example, Houston Horizon Chorus anticipates adding 14 new members within the month, with more in the wings. Crescent City Sound Chorus in New Orleans has brought in 4 new members since January 1, and plans to audition 3 more soon.

Denise Dorriety, member services manager of Houston Horizon Chorus (dtmiller4@yahoo.com), shares what HHC is doing to draw singers to its ris-

ers:

Marketing: *At the current time, we are not using paid advertising (far too expensive). Marketing through a variety of outlets has helped. **Social media:** We are finding some singers through Meetup.com --we advertise upcoming events there. We try to keep a weekly dialog/conversation there. As Member Services Manager for HHC, I contact each new person who signs up on Meetup (ones that are not our current members). We also have a Facebook page that we put flyers about events on, and some of our members share the information from that on their own timelines. **Other media:** We sometimes put short blurbs in community newspapers/neighborhood papers/etc., provided it is free.*

Responding to inquiries: *Our Technology Manager keeps me informed of inquiries that come in through our website. I try to respond to those quickly. I keep track of visitors who have come and periodically, I contact them about events or to check to see if they are still interested, etc. If you put them on an email list to tell them about community performances/shows/etc, it helps to keep them in the pipeline and per-*

haps they will become either members at some point or avid supporters/benefactors.

Open auditions/guest nights/Christmas chorus: *Some of these folks were a part of our Christmas community chorus, and they got hooked. Most of these were simply invited by our members. The Christmas chorus does not require that the guests become fully active members, so they can "try it out". Last year we started having the open auditions similar to what Talk of Tulsa does (we have had 3 sets of open auditions). But we still have the Guest Night/Global Open House as well, usually right after auditions. We also consider any rehearsal night a guest night. We try to give them a Riser Buddy to answer questions **and** to have someone to connect with.*

Friendliness of the members: *It has been stressed to our members that the thing that hooks most guests is the friendliness of the current members toward them. We encourage our members to interact with and welcome those who are guests.*

Continued on the next page...

▶▶▶ Happy Members

by Carol Mouché, Membership Coordinator, Great Gulf Coast Region 10

region10mem@aol.com



Region 10 Membership Is Growing, Thanks To You!

Role of the director/ atmosphere of rehearsals: Having an interim director such as Ruth Ann Parker, who is both challenging and fun, has certainly brought out something in HHC. A director who is upbeat in nature and excited about what she is doing and who passes that along to both members and guests is great to have.

Sue Englebert, membership chair of Crescent City Sound Chorus (sue.Englebert@gmail.com), shares how her chorus has attracted their new members this year:

We promoted a “**sing with us for the Holidays**” program that started at the end of October. No obligation -- rehearse holiday music with us and sing with us. We had 13 guests total come to various rehearsals from Oct 28 through Dec 2. Some were by personal invite, some came because they saw a flyer, and some saw our web site.

Guests were given music to hold, and allowed to sing with us on 3 non-paid performances. The caroling around the French Quarter was very fun.

Guests were **assigned riser buddies** to keep them engaged in Chorus activities and touch base with them through-

out the week (not just on rehearsal night).

We **promoted** the Holiday guest program through small flyers (4x6 inch) at our October Show, bigger flyers posted in various locations by our members, word of mouth, our web site, and articles in 2 newspapers. We did not pay for advertisements.

Guests who were interested in joining were allowed to audition on 2 Holiday songs in December and all guests were invited to our annual Holiday party.

We **promoted** our membership drive during our Holiday performances again with 4x6 inch flyers, posters, and posting on our website. We also started our Facebook site and promoted the membership drive through that medium. On January 13 we had 6 new prospective members walk through our doors – 1 was with us for the holiday guest program and the others either saw us at performances or found us through our web site. Using the riser buddy system, we now have 3 of the 6 working toward auditioning/joining CCSC.

The biggest tool we are using that works consistently is the **web site**. Updating the web

site regularly keeps it high in the “search engine” world. Also, once they find us, the riser buddy program has helped keep them interested and has eased their concerns.

I hope that these choruses’ experiences have given you some ideas to try with your own Membership programs. Feel free to email Denise or Sue to ask them specific questions – they are eager to help. And remember that the Sweet Adelines International website has many marketing/ membership tools available for free in the Training Library (login required) at: <http://sweetadelinesintl.org/index.cfm?id=237>.



"Direct"ly Speaking *by Sheri Strawther*



Region Ten Directors:

I hope all of you are having a great new year so far and wonderful rehearsals with your choruses. I'm excited about our Director Seminar coming up this May. This will be held in conjunction with the Leadership Workshop May 16-17. Our fantastic faculty for the weekend will be Molly Huffman and Paula Davis. They will be teaching classes customized for our region from your suggestions at our Winter Regional director's lunch meeting. More information will be coming soon but mark your calendars for that weekend. It's going to be incredible!

As we prepare for our year ahead, I know we will all be focusing on how to help our chorus to be the best singers they can be. I wish you all great rehearsals and a wonderful competition experience in April. Below is an outstanding article written by Dr. Jim Henry titled "Singing above the pipe. How to never sing flat again." Dr. Henry is the director of choral music at the University of Missouri in St. Louis and a co-director for the Ambassadors of Harmony (3 time International Champion in the Barbershop Harmony Society). Happy rehearsals everyone!

Singing Above the Pipe. How to Never Sing Flat Again *Dr. Jim Henry*

Supreme importance is placed on our ability to sing in tune with one another and to the tonal center. It is this all-too rare quality that separates the great ensembles from the merely good ones. The first step toward accomplishing this task is mastering the elements of posture, breath support, and phonation. But that isn't the whole secret. Excellent tuning is also a function of the following:

1. Internalizing the tonal center while you sing-Try to develop a sense of where *do* is at all times. It is all too common for ensembles to flat a song. The moment that occurs all energy is sapped from the performance and any hope they had of truly connecting with the audience is lost. Try this: in the middle of rehearsing a song, stop everything and have the singers sing *do*. After a while this will become quite easy to do.
2. Never hum the pitch when it is given to you. It just tightens you up and keeps you and your peers from being able to properly audiate the pitch with the inner ear (i.e., hear it in your mind).
3. Hearing and performing gradations of pitch between the half notes of the piano- You are not a piano. The half step is not the smallest interval you can sing. Like a violin or trombone you can slide from one note to another, sounding countless incremental pitches along the way. Singing "in the cracks" is an important skill to develop. We have all become accustomed to singing with the piano. The trouble is the piano uses a tuning system called equal temperament, which allows it to play in any key, but also renders it slightly out of tune. We will tend to use just intonation, whose intervals are made up of simpler ratios, and therefore more consonant (and thus more in tune) than most equally tempered intervals.
4. Hearing the "lock" of a perfectly tuned chord-When a chord is perfectly tuned, you will hear several overtones above the chord. The more in tune you are the more overtones you will achieve. When the overtones are strongly present you will get a palpable sense that the chord has completely gelled or locked. This is what we are striving for at all times.
5. Matching vowels with one another. What makes one vowel sound different than another? When you sing a note, you are not only singing that fundamental pitch, but also countless frequencies-called *partials*-above that pitch. Some you might be able to hear and many will extend above your range of hearing. The way you shape your mouth for each vowel inhibits some of these frequencies and brings out others. Each of these patterns of partials results in a different vowel sound. For that reason two people can sing the same fundamental pitch, but if their

vowels aren't matched (that is, if the partials that create those vowels aren't lined up) they will be out of tune with one another. If that is true of only two people, imagine the damage that an entire ensemble can do if they aren't matching vowels. On the good side, however, when the entire ensemble is matching vowels the partials will be so dramatically reinforced that the overtones will be screaming.

6. Balancing the chords properly-In general the ensemble should be balanced like a pyramid, with the bass as the strongest voice and the tenor as the lightest. This, too, will reinforce the partials and help us to tune.

7. Harmonizing with the other sections - Many unskilled singers learn their part and sing it without any regard as to how it harmonizes with the other parts. To really tune you must always be globally aware: keep your ears open and slot your notes into the ensemble sound.

8. Approaching pitches from above. NEVER scoop up to a note. This is not only true of entrances but also ascending and descending notes within the phrase. Developing this habit (and it takes a good deal of conscious effort to do so) will keep the spin in your voice and help you to stay on the high side of every note.

9. Avoiding flat traps:

- Repeated notes-each successive note must be sung an "onion skin" (extremely thin margin) higher.
- Returning to a note-again each time you sing it, you should do so an onion skin higher.
- Scale degrees 2, 3, and 6. Show me an ensemble that can sing scale degrees 2,3, and 6 in tune and I'll show you a ensemble that never goes flat.
- 10. Being "anti-gravity" in everything we do-Gravity will pull our pitch down along with everything else. It is the enemy and we will fight it. We will stand tall, lift our chest, lift our cheekbones, lift our soft palate, lift our lips off our teeth, and even lift our eyebrows slightly when we sing. We will never let our voices get heavy.

Instead we will place our voices high and forward, and spin the notes out on a steady column of warm air. The piano's note won't be good enough for us. We will strive to make it sound slightly dull to our tonal center.

PIN PAL & BINGO

Elizabeth McCurdy, Marketing Coordinator

The Pin Pal Program continues to be very popular at our Regional meetings. It's a great way to meet members from other choruses plus everyone loves collecting all the great looking buttons and pins. The designs are colorful and each pin is wonderfully unique in size and shape, from 'gold' nuggets to hand painted buttons and enameled metal.

Seeing what a good time everyone's having meeting each other and exchanging pins, the RMT started looking at ways to get in on the fun. As a result, RMT Bingo was created and kicked off at last month's Winter Regional Meeting. The game is simple; members receive an RMT Bingo card containing 9 squares, one square for each of the 8 RMT Coordinators plus a "Free" square in the middle. The object is to meet each of your RMT Coordinators and ask them a question about their position to get your card stamped. Once all 8 stamps are collected, completed cards are exchanged for an "I Met My Region 10 RMT" button (to add to their Pin Pal collection).

At the Winter Regional Meeting, completed RMT Bingo cards were entered in a drawing for reserved seating for the upcoming Show of Champions on Saturday night of competition weekend. Congratulations to our lucky winners, each receiving 2 reserved seats:

Marlene Snare - Texas Harmony Chorus

Jayne White - Chisholm Trail Chorus

Kathy Stevens - Heart of the Pines Chorus

Carol Herman - The Woodlands Show Chorus



Since the Pin Pal program launched, 11 of our choruses have created pins to share at regional meetings. For detailed information about the Pin Pal program, please see the full page article on page 29. A reminder that the goal is to keep the cost of the pin low for your members so everyone can participate. Be creative! We hope ALL choruses choose to participate in the Pin Pal exchange program at contest, when everyone will be there.



What will our new logo be?
The unveiling will be
@ Regional Competition in April!

2013-2014 Regional Management Team

Communications Coordinator

Karla Fenton

Finance Coordinator

Cheryl Pyle

Directors Coordinator

Sheri Strawther

Marketing Coordinator

Elizabeth McCurdy

Education Coordinator

Ronda Perez

Membership Coordinator

Carol Mouché

Events Coordinator

Marilyn Turner

Team Coordinator

Gail Eltgroth

Dear members,

It is my pleasure to announce the 2014-16 term for Regional Management Team positions has been filled as follows:

- * Education Coordinator Ronda Perez (International appointment)
- * Communications Coordinator Karla Fenton
- * Membership Coordinator Carol Mouché
- * Team Coordinator Gail Eltgroth

These terms begin May 1, 2014.

FYI: The Membership Coordinator is an elected position, voted on by the membership in Region 10. However, the RMT had not received any other applicants for the position; therefore, Carol was appointed by acclamation by the team.

The team is constantly seeking out new leadership for the future of Region 10. Consider filling out an application today (found on the Region 10 website under Resources). Our "shadow program" will give you an opportunity to see how the team works and where you might best serve your sisters in harmony. The following list of job descriptions may be of help to you in this process.

In Harmony, Gail Eltgroth, Team Coordinator Region 10

Communications Coordinator – Regional Appointment – term begins even years

Receives communications from the International organization and disperses to the region

Maintains internal communication channels among the region, chapters, and individual members

In consultation with the RMT, prepares and submits year-end Team Report to the Meetings and Corporate Services Department at International Headquarters by established deadline

In consultation with the RMT, prepares and submits summary of Annual Regional Report to the Meetings & Corporate Services Department at International Headquarters by established deadline

Supervises production of regional newsletter 3 times annually.

Conducts Chapter Visits as requested by Education Coordinator

Directors Coordinator – Elected – term begins odd years

Represents the interests of regional directors on the Regional Management Team

Communicates with directors in her region to assess their needs

Communicates directors' needs and the needs of their chapters to the Education Coordinator

Provides and facilitates a forum for directors at regional events

Conducts Chapter Visits as requested by Education Coordinator

Education Coordinator – International Appointment term begins even years

Develops, coordinates, and monitors regional educational programs in conjunction with other coordinators

Plans curriculum for educational events such as seminars and workshops

Works in coordination with Events and Marketing Coordinators on marketing events

Coordinates regional faculty visits to choruses

Maintains five-year education plan document

Implements the chapter revitalization plan for maintaining the integrity of the musical product and administrative process as outlined in the RMT Handbook

Approves chapters and prospective chapters for public performance

Auditions for approval Chapter-at-Large quartets for public performance

Develops faculty or staff to assist in implementing regional educational programs

Appoints an Arrangers Coordinator who administers the program that offers training for aspiring arrangers within the region

Appoints a YWIH Coordinator to educate and inform the musical leaders in each chorus about the YWIH program

Appoints a DCP Coordinator who administers the program within the region

Events Coordinator – Regional Appointment – term begins odd years

Facilitates the securing of appropriate venues for regional programs and events, including site inspections and negotiation of contracts

Coordinates on-site arrangements for all regional meetings and events, including regional competitions

Serves as or oversees the work of the Chair of the Regional Convention (CRC) as defined in the Guidelines for Regional Convention

Works in coordination with the Marketing and Education Coordinators on marketing events

Oversees registrations for all regional events

Conducts Chapter Visits as requested by Education Coordinator

Finance Coordinator – Regional Appointment – term begins odd years

Ensures that all financial resources of the region are accounted for in an effective and efficient manner

Coordinates the long-range financial plan in conjunction with other team coordinators

Prepares and submits the annual budget for the region

Manages bank accounts and investments and keeps accurate and current records of all financial transactions

Receives all funds paid to the region and issues all payments

Negotiates contracts for equipment and services required by the region

Holds sole authority to sign contracts on behalf of the region

Coordinates projects to raise non-dues income

Presents a report on the region's financial condition at meetings of the RMT

Prepares an annual financial statement for submission to the Director of Finance and Administration at International Headquarters

Submits accounting records for audit at the close of the fiscal year to a qualified person (or persons) selected by the RMT or for examination or audit at any time as directed by the RMT

Files Annual 990 tax form (United States regions) with the Internal Revenue Service by September 15 for the preceding year ending April 30

Provides advice and training to chapter treasurers and serves as a resource to chapters with financial questions

Provides financial information necessary to complete application for corporate gifts/grants

Conducts Chapter Visits as requested by Education Coordinator

Marketing Coordinator – Regional Appointment – term begins odd years

Develops and provides marketing and public relations programs that promote chapter and regional events, and membership growth and retention

Plans and implements marketing and public relations programs to increase membership growth and retention

Designs and implements plans to market events and products

Works in coordination with the Membership Coordinator on membership growth and retention plans

Works in coordination with the Events and Education Coordinators on marketing events

Works in coordination with the Communications Coordinator on Web site and database design, implementation, and maintenance

Maintains a complete record of regional meetings and activities

Maintains database of media contacts

Writes and distributes press releases and produces media kits

Invites media to regional events and serves as onsite media contact

Initiates media opportunities including on-air interviews and feature stories

Maintains database of advertising contacts

Designs, negotiates, and buys advertising in local media

Sells advertisements in regional publications

Conducts Chapter Visits as requested by Education Coordinator

Membership Coordinator-term begins even years

Elected by Region 10 Chapters & Chapter at Large (CAL) Members

Represents the interests of chapter management and membership on the Regional Management Team

Communicates president/team leader and chapter needs and issues to the Regional Management Team

Provides and facilitates a forum for presidents/team leaders at regional events

Instills in the members of her region an awareness of their relationship to the organization, to the region, and to other choruses

Develops a plan, in conjunction with the Education Coordinator, to teach chapters in revitalization ways to attract new members and retain existing ones

Plans and implements programs in the area of membership growth and retention

Works in coordination with Marketing Coordinator on membership growth and retention plans

Visits and maintains regular contact with chartered chapters to promote membership growth and retention programs

Guides prospective chapters through the Steps Toward Chartering program

Assists chapters in revitalization with growth and retention programs

Develops support staff to assist in planning and implementing programs such as

Steps Toward Chartering

Membership Recruitment

Membership retention

Chapters in Revitalization

Appoints a Chapter-at-Large Coordinator to ensure CAL members' awareness of and inclusion in regional events, programs, and publications

Appoints a Chapter Coordinator to maintain regular contact with chapter presidents/team leaders to assess and communicate chapter needs to the Membership Coordinator

Conducts Chapter Visits as requested by Education Coordinator

Team Coordinator - Regional Appointment – term begins even years

Facilitates meetings of the Regional Management Team

Coordinates agenda for Regional Management Team meetings with input from members

Reviews and approves all chapter standing rules

Reviews regional standing rules and job descriptions, and makes recommendations for necessary revisions

Maintains the region's long-range plan document

Maintains the regional calendar

Develops a support staff to assist in implementing responsibilities such as

Chapter standing rules review

Regional calendar

Is responsible for recording and preparing minutes of all meetings of the regional management team

Distributes copies of minutes to members of the team, regional chapters, and the Meetings and Corporate Services Department at International Headquarters

Marketing YOUR CHORUS 10th CHOIR

**Karla Fenton,
Communications Coordinator**

What does a chorus have to do to Market a show thru the regional website and email/yahoo-groups?

The RMT often gets requests to add a date to the regional calendar on the website or email out a show announcement for a chorus. We have found that many people are surprised to learn that there is a procedure to this!?! To help new (and perhaps not new) members of chorus Boards/Teams, we have listed below the steps to get on the calendar and use/send via the yahoo-groups email.

Have your President/Team-Coordinator/Operations-Manager fill out the "Chapter Date Clearance Form." It is found at:

<http://region10sai.org/>

Under "Resources"

Under "Regional/SAI"

Name of document is "Chapter Date Clearance" available as PDF or Word document

The chorus Pres/TC/OM, sends the completed form to the Team Coordinator of the RMT. At this time, it is Gail Eltgroth – her contact information is on the form.

Once the form is received by the RMT Team Coordinator, she will notify the following people that the date has been approved:

The chorus Pres/TC/OM

The RMT Marketing Coordinator - so she can have the date added to the website

The RMT Communications Coordinator - so she is able to send out an email notice to the yahoo-groups.

Once the chorus receives the notice that the date has been approved, someone from the chorus can/should send an email with the text announcing the show to the Communication Coordinator (currently Karla Fenton). A PDF or JPG of a flyer can be sent as well. The show can be emailed out twice. The suggestion is to do it once early and then once right before the show.

FYI's:

It is necessary to go through this process to have your advertisement/flyer to be published in TIWT.

We do not announce or approve "Guest Nights" or "Membership Drives" as all of our choruses are having them and with the Global Open House incentives, most are having them at about the same times.

If you have any questions about the procedure listed above, please feel free to contact: Gail Eltgroth (RMT Team Coordinator), Karla Fenton (RMT Communication Coordinator), or Elizabeth McCurdy (RMT Marketing Coordinator).



Click
Me!



FOR ACCESS TO REGIONAL
INFORMATION AND PHOTOS
FROM EVENTS AROUND
THE REGION, "LIKE" OUR
FACEBOOK PAGE.

CLICK THE BUTTON
BELOW THEN CLICK THE
"LIKE" BUTTON!

YES, IT'S THAT EASY!

[https://www.facebook.com/pages/
Great-Gulf-Coast-Region-10-Sweet-
Adelines-
International/242988069051247](https://www.facebook.com/pages/Great-Gulf-Coast-Region-10-Sweet-Adelines-International/242988069051247)

From the History Department

by Karen Bernard, Historian, Great Gulf Coast Region 10

Scrapbook Pages & information on the **Twenty-first Annual Wall of Fame** were given out during the Winter Regional Meeting in Houston and have already been mailed out & received by those choruses who were not present. I encourage all choruses to honor **only one** special member on this year's Wall of Fame and to be included in the Regional Scrapbook for 2013-2014. Wall of Fame Certificates will be presented and Scrapbook Awards will be announced during competition weekend, probably on

Saturday night.

Be sure to visit the Historian's table (s) in the Regional Boutique at every meeting and especially at contest. The Region's Historical Chorus and Quartet Champion Albums and some Region 10 scrapbooks are on display. You'll also find recent snapshots and chorus/quartet photos for sale at very low prices. **Older photos are now FREE!**



If you have any questions, my contact information is:

(home address) 841 Hwy 182;
Sunset LA 70584.

My phone number, fax & e-mail
(h) 337-662-3247;
(fax) 337-662-2274;
(e-mail) kbsings@centurytel.net

laugh

It is with great pleasure that Region 10 announces a new winning quartet for Young Women in Harmony! Lock & Key from A Capella Unlimited Chorus brought home the gold this January to win the 2014 title of Region 10 Young Women in Harmony champions! Congratulations to Tiffany, Layne, Ariel and Serena!

Region 10's former YWIH champions, Grace Notes, will be traveling with the Texas Children's Choir to France in June to sing for the American and French Ceremonies at the 70th Anniversary of D-DAY in Normandy. What a wonderful way to share their gifts!

IN OTHER NEWS: Sweet Adelines is bringing back the International RISING STAR Quartet competition on August 2, 2014 in Region 1's Lowell, Massachusetts. At this time, both our reigning and former champions are planning to participate in the Rising Star contest, which means that Region 10 may have TWO contestants in this year's line up!

As some of you may have heard, big changes have been made in my life recently and as of March 2014 I will be a member of Greater NY/NJ Region 15! I will always be in Region 10 in my heart, and I'll continue to be a supporter and resource no matter where I go. Please stay tuned, as a new YWIH representative will be named soon. Thank you so very much for all of the love and support this region has given, and for having always been my undeniable extended family.

With love,
Laura

sing



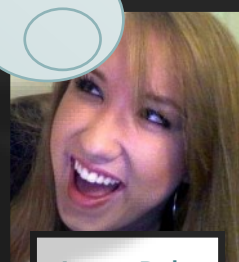
Contestants



Lock & Key



Grace Notes



Laura Pyle

[www.facebook.com/
region10ywih](http://www.facebook.com/region10ywih)
region10ywih@gmail.com



A Cappella Unlimited Chorus *by Tava Herring*

AU has been extremely busy and having fun doing it. AU participated in a good will performance for Col. Bruce Conover's 90th birthday in November. Col. Conover was the lead of the Vikings Quartet who were the 1953 Men's International Champions. We also sang the National Anthem at a Spurs Game. Our regional visit (with Ronda Perez and Carol Scherer) is always a treat

and was informative as well. We were thrilled to be invited to sing at San Marcos 'Sights and Sounds' to begin the holidays. We also performed at Morgan's Wonderland in San Antonio, the Headliner's Club in Austin for the Austin Community Eagle's Society, and Concordia Lutheran Church in San Antonio, singing during two services. January found AU partici-

pating in an all-day characterization workshop with Nita Myers and Margaret Bowman. We were present during the winter regional weekend quartet workshop in Houston where our own 'Lock-n-Key' placed 1st in the Young Women in Harmony Quartet Contest; and enjoyed our annual retreat in Fredericksburg, TX with Coach Bryan Pulver.

AU would also like to welcome new members Mari-sa Garza and Melissa Moody. We are excited to have these talented young women become a part of our AU family.



AU and Santa Baby at Morgan's Wonderland



AMC: 25th Anniversary Show

Happy 2014 from AMC! We are so excited about all the wonderful things this year has in store for us! We started off by participating in the SAI Global Open House. We were thrilled to

Alamo Metro Chorus *by Lisa Deiser*

have 16 guests join us during those two weeks and are hoping to add some of them to our roster. Next was the Winter Regional Meeting in Houston.

Twenty-two of our members attended, and AMC was represented with two quartets in the Mock Contest, as well as two groups in the Double Quartet contest. We learned so much

from the fabulous Peggy Gram and our quartets benefited greatly from the wonderful coaching made available to them. The following week we were dazzled by the incomparable Renee Porzel, who traveled to Texas to teach us a new choreography plan for competition. In a partnership with Goodwill Industries, we participated in a fundraising event that netted us \$2,500.00 in

just one day! We are also looking forward to two coaching sessions with "Awesome Joe" Connelly. And that is all in January!!! February will find us delivering Singing Telegrams for Valentine's Day and continuing to work hard for Regional competition in the spring. See you there!!!!

Austin Harmony Chorus *by Kathleen Leary*

"...Hark how the bells, sweet silver bells, all seem to say: 'Throw cares away!' These words rang the true and simple joy that marked our Christmas sing-out experiences this past holiday season. We started by sharing our songs with early Christmas shoppers before Thanksgiving, followed later by joint performances with the A Cappella Men's Chorus, warm receptions at private Christmas parties, Senior Living Centers, and community luncheons. We concluded with the privilege of entertaining giggly, starry-eyed children and the older children-- their parents, at the Austin Trail of Lights.

Of course, each chorus member approached all ten performances with the signature smile, energy, and dedication that defines a Sweet Adeline.

Earlier in the fall we were also able to "throw our cares away" regarding Chorus growth. We added four new members: Sharon Cullison and Robyn Palmer as a result of our Guest Night on Sept. 30 and through our Meet-Up page, Stephanie Lawshae and Mary Kahle.

Not to be outdone, another new person has added his voice to the world

stage. Bradley Ryan Johnson, JoAnn Flanagan's grandson, made his long-awaited debut on November 22, 2013. Photos as well as hearts are overflowing!

Our new endeavor will begin this February. Our Marketing Coordinator has notified the Austin Statesman and other media that Austin Harmony quartets will be available to offer the gift of song and roses to prospective Valentine honorees.

As we rev up our "engines" in preparation for the 2014 Regional Competition

this April, our wish for all of you is: have fun, break a lip, and throw your cares away!!



Our newest members

Azalea City Harmony Chorus by Torri Necaïse

Happy 2014! It's hard to believe another new year is underway and many of us are wondering where the time has gone. Wasn't Christmas just yesterday?!?! Azalea City Harmony wrapped up 2013 with our annual Christmas show, **Countdown to Christmas, on November 23. We had a very successful show and silent auction. We had 8 sing-outs** throughout the month of December. It was a busy and festive holiday season.

2014 has started off busy as well with a Global Open House on January 14. **We have had 6 guests in January. We have enjoyed getting to know them and they are fitting right in with us!!** Our attention is now on competition!!! We are working hard on our music and our choreography. **We were scheduled to have coaching on January 28 with Darlene Rogers, but we had to reschedule because of an unexpected ice storm in Mobile. Who would**

have thought of such a thing?! We are now looking forward to having her on February 20, right in the middle of Mardi Gras! We are dreaming big and looking forward to seeing all of

our new singing sisters in Houston!!



Azalea City Harmony



Where's Santa

Oh what fun it is to sing.... And sing we did! Baton Rouge Chorus did the Christmas season a little differently this year. In the past, we would do performances at many of the retirement and nursing homes in the area every Tuesday and Thursday nights, as well as

Baton Rouge Chorus by Emily Wascome

weekend gigs. This year we decided to put on a Christmas show and invite everyone to come to us. The show was on December 1st and was called *Where's Santa?* (along the lines of *Where's Waldo?*). Local TV celebrity, Donna Deaton, played the mother and Jada Gardner played her daughter. Santa (played by John Douthat) went missing from his photo station at the mall! He was spotted all over town and finally made his way back to the mall where kids were able to get their picture made with him. It was lots

of fun doing this show and the audience seemed to love us! We did accept gigs for the other three rehearsal nights of December to round out the season and put smiles on many faces.

Baton Rouge Chorus has decided to use our retreat weekend in February to have the wonderful Sandi Wright (St. Louis Harmony director) help us prepare for a big summer show on July 19th. We've decided to sit out the 2014 regional contest in order to have more time to work on a 2015

Open Division package. Retreat will again be at The Rivers Retreat Center in Covington and we can't wait. We always learn a lot and manage to let our hair down, too!

We are terribly excited to have five guests currently working toward membership. Three came to us as a result of the Women's Week event we participated in, one from MeetUp.com that we recently joined, and the fifth is the sister of one of our young members. Good things coming from Baton Rouge Chorus!

Bayou Blend Chorus by Karen Bernard

Greetings from "icy" Cajun Country & Bayou Blend Chorus! We received a certificate from Sweet Adelines International congratulating us on being FIVE YEARS OLD on December 8, 2013! Our December 7th show "Trouble in Toyland" was a huge success, with good crowds for both performances. The chorus' toy costumes were a big hit with the audiences.

Christmas performances were limited this year because of our show date but we were able to perform in the chapel at Acadian Village. Our chorus Christmas party was held afterward at La

Pizzeria Restaurant (owned by our member Ellen's daughter). We brought donations for "Toys for Tots" that night, too. The Marines were very happy to get our toys which were delivered by Lynette and Karen later that week. Next up was a performance at the First Baptist Church of Broussard for their Carols and Candles program. We really enjoy singing for the congrega-

tion at our rehearsal site during the Christmas season.

Doris, Kate, Marsha, Susan, Karen, Alice, Marisa, Catherine and Debby attended the Winter Regional Meeting. Peggy Gram was such a great teacher! No matter how many times we attend educational weekends, we always learn something new to take back to chorus. That "chocolate round" was a big hit and we had fun teaching it to everyone at rehearsal.



Bayou Blend: Trouble in Toyland

Bayou Blend is looking forward to February for two reasons. The first: Team Leader Kate is hosting a weekend retreat in Pensacola Beach, Florida. Attendees will come back with renewed vigor and with lots of "stories" about their time there. The second: Our Region 10 visit with Sheri Strawther and Gail Eltgroth at the end of the month will help us musically and administratively.

We're not competing this year so you'll see Bayou Blend members volunteering and cheering for everyone!

welcome to our newest members

Soojung Choe
Kristin A. Giersdorf
Karen Grizzard
Ashley Grizzard
Marcia Kelly
Catalina Miguel
Samantha Perez
Valerie Rabadan
Elizabeth Speigle
Tracy Watson
Elyana C. Farley
Mary Kahle
Stephanie Lawshae
Jackie Hawkins
Karen Lundy
Debbie Taylor
Ellie O'Dell
Chelsea O'Dell
Mary Ballard
Cookie Weinert
Anne Cafiero
Vicky Mifsud
Lilah El-Fakih
Mindy Meadows
Catherine Raftery
Cathi Svetleic

Alamo Metro
Alamo Metro
Alamo Metro
Alamo Metro
Alamo Metro
Alamo Metro
Alamo Metro
Alamo Metro
Alamo Metro
Alamo Metro
Alamo Metro
Austin Harmony
Austin Harmony
Azalea Harmony
Azalea Harmony
Cradle of Texas
Cradle of Texas
Cradle of Texas
Cradle of Texas
Crescent City
Sound
Crescent City
Sound
Crescent City
Sound
Crescent City
Sound
Heart of the Pines
Magic Valley
Magic Valley

Krisi Key
Traci Massey
Peggy Moore
Jamie Oliveaux
Judy Sapp
Samantha Williamson
Sue Ellen Wheeler
Teresa Howard
Cathy Chaney
Jeanne Evans
Joni Miller
Shirlee Avis
Jimmie Hargrove
Amanda Thompson
Lynn Poston
Lea Rutherford
Lorri Masse
Deb Coniff
Karen Johnson
Barb Feighner
Barbara Crain
Faline Christensen
Claudia Lasiter
Alice Haagen
Kellie Walsh
Maureen Godfrey

Piney Hills
Harmony
Piney Hills
Harmony
Piney Hills
Harmony
Piney Hills
Harmony
Piney Hills
Harmony
Piney Hills
Harmony
Piney Hills
Harmony
Piney Hills
Harmony
Sparkling City
Spirit of SET
Spirit of SET
Spirit of SET
Spirit of SET
Texas Harmony
Texas Harmony
Texas Harmony
TWSC
TWSC
TWSC
TWSC
TWSC
TWSC
TWSC
TWSC
TWSC
TWSC
TWSC
TWSC

Freshman

freshman

Chisholm Trail Chorus by Linda Goodenough



We made the news!



Chisholm Trail at the mall

Chisholm Trail Chorus presented their Fall Show "Wrapped Up In Harmony" November 23 at our wonderful Cultural Activities Center in Temple. The show began with traditional barbershop, had as special guest "The Ransom Notes" and ended with the audience participation in "Santa/Rudolf Medley". The second half of the show was started by the "Ransom Notes" a premiere a cappella group from the University of Texas. They are a group of students, most not majoring in music or the arts, that put together a cappella s, with vocal sound effects. The Chorus then finished the show with Christmas songs and the audience, Ransom notes, and chorus sang the Santa/Rudolf Medley to close the show. This was a very successful performance and a good time was had by

all.

December saw the Chisholm Trail Chorus staying very busy. We were scheduled for our annual participation at the "Salado Christmas Stroll", December 6th, unfortunately we were rained out. We sang at the "Pace Setters" Christmas dinner held at the Temple Bible Church in Temple, and then traveled across town to the "Country Lane Retirement Apartments to sing more Christmas songs.

Our dedicated Music Staff performed at the Czech Museum Holiday Open House, we opened and manned our "Christmas Gift Wrap" at the Temple Mall, performed Christmas songs at the Mall and held our annual Christmas dinner at "Cotton Patch"

restaurant. The board held there December meeting at the "Gin" in Belton and deserts were much enjoyed by all.

January found us excited and ready to go for contest. We hosted a one night open house January 16 and had five visitors. We currently have three going through the trial period. January 31 and February 1 we had our annual retreat at "Summers Mill" in Salado. Ruth Ann Parker was our weekend coach and many steps to improvement were taken. This is such a great place to have a weekend with great friends and great coaches.

We are looking forward to visits from Sheri Stawther and Darlene Rogers in February to continue our progress to contest in April.

Cradle of Texas by Jane Vaucher

The Chorus is very proud of our dual member Bonnie Fisher who competed with Houston Horizon at International in Hawaii.

Cradle of Texas celebrated its 35-year anniversary, having started in Angleton Texas, and moved to our current Sugar Land location about seven years ago.

We had a great response to our publicity campaign inviting our 'Christmas Elves' to sing with us at Christmas - we are so excited that 'elves' have become members and

are very pleased to welcome Debbie, Mary, Chelsea and Ellie! We can also report that Meetup.com continues to be a good publicity method that brings in a steady number of visitors who, we hope, are well on their way to becoming members.

We had some fun Holiday performances and the chorus very much enjoyed learning 'The Twelve Days After Christmas'. We added some very entertaining choreography, and Karen Askin proved very tal-

ented with her duck and geese calls!

A local TV station video reporter from HCC Stafford TV, videorecorded two of our September Christmas rehearsals and a December Christmas performance and conducted interviews, with the theme of local groups and Holiday activities. The result was an excellent report on Cradle of Texas. Check it out on YouTube! <http://youtu.be/bX5HjhP30JA>

A number of us enjoyed the recent Regional meeting and we are all now enthusiastically preparing for Regional Contest.



Bonnie Fisher



Crescent City Sound by Holly DiDomenico

The Crescent City Sound Chorus has had a GREAT couple of months and has been very busy. We had our annual show in October that was a smashing success.

The annual show was held at The Academy of the Sacred Heart's Nims Theater. In the opening scene, CCSC marched through the audience to the tune of "When the Saints Go Marching In", played by the Chalmette High Jazz Band. Already the audience was prepared for an exciting show. The first songs were "New Attitude" followed by "In the Mood." The three quartets, Fleur de Lis, Felicity and JazzMaTazz!! sang to perfection and the small group "Just for Fun" sang an Elvis Medley with a not-so lively Elvis. "Dancing Queen" with choreography and "Beauty School Drop Out" featuring the Rah Rahs with hair curlers was a show stopper. The finale was "Jail House Rock" played by the Chalmette High Jazz Band

and sung by the chorus including dancing.

After the show was done, we had our first open event (kind of a pre-membership drive) where we invited guests to sing Christmas songs with us to experience barbershop harmony with Christmas songs. We had 14 guests visit us and they were allowed to sing with us at several unpaid performances in December to celebrate the holiday. It was great fun and wonderful exposure for our chorus and this addicting hobby. We were blessed to have four of them decide to audition and they joined our chorus officially in December.

They were welcomed to the chorus with a song in January. In the picture are: Cookie Weinert, Bass, Anne Cafiero, Tenor, Mary Beth McMurray, Director, Vicky Mifsud, Lead and Lilah El-Fakih, Baritone. This "quartet"

of fabulous new voices is a wonderful addition to our chorus and all are planning on going to competition with us in April.

Currently, we are in the middle of our Membership Drive where we hope to encourage several prior Sweet Adeline ladies to join us and get more new members to love our art form and join us. We have had 6 guests so far with several more who have contacted our Membership Chairman to say that they are interested.

We are working hard on our competition songs with coaching sessions and extra rehearsals to strengthen our voice production, etc. We are looking forward to competition to show our regional friends how much this has paid off in our contest performance.



Crescent City Sound Chorus
Top: Mary Beth McMurray with new members
Bottom: On stage @ the chorus' annual show.

Fiesta Texas by Betsy Billinger

Hello from Fiesta City! Our fall and winter months were busy writing and creating a winter musical called "We Need a Little Christmas or A Tree Grows in Grumble's". There were dialogues to memorize, props to create, and songs to wrap around the plot of a scrooge and her department store staff and customers trapped in the store on Christmas Eve. We did two great performances at the Josephine Theater in addition to our

yearly sing-outs for the holidays.

On 14 January 2014, Ed Wiskemann, husband of our director Sally, died suddenly of cardiac arrest. He was a tremendous support to our chorus and a Sweet Adeline husband for over 50 years. He will always be remembered.

Fiesta City Chorus



Heart of the Pines by Lorna Laster



Heart of the Pines Chorus had a very busy fall. A show, *Divas Revvin' Up*, in October, a garage sale, many Christmas performances for local and surrounding areas' clubs, church group events, and nursing homes kept us very busy. We sang with pride, and had a lot of fun. Then we took a Christmas break for 2 weeks.

Mindy Meadows has joined HOP as a

wonderful lead. Mindy was formerly in the Army before marriage and family. Two promising guests showed up on our doorstep. However one, a young bass, announced she was moving to Tennessee. So we made sure she knew about chorus possibilities there. The baritone guest is auditioning soon.

We published in the local paper that we were having an Open House for consecutive 3 weeks in January (see picture). Alas,

no guests, but lots of brownies. Now we are getting ready for Singing Valentines. We are thinking we should have a full schedule this year as the Timbretones Chorus (BSA) has disbanded.

Getting ready for contest brings Darlene Rogers for coaching Feb. 4. Virginia Fitzpatrick, (Shondells lead, 1977 Queens) is coming with her. We are also looking forward to our Regional Visit with Carol Scherer and Karla Fenton Feb. 22.

Houston Horizon by Leah Jorgensen

The Houston Horizon Chorus is full of excitement as we look at the new possibilities ahead of us! After a fantastic time at the International Competition in Honolulu, and tearful good-byes to our most beloved Vickie Dennis, we have started 2014 on new feet!

We are very fortunate to have the opportunity to

have the remarkable, wonderful, and motivating Ruth Ann Parker for our director through the Regional Competition! Not only has she been pulling out some wonderful sounds but we're having a blast working diligently to raise our performance level! We're now being prepared for some fantastic coaches! Our

Guest Night and recruiting has been so successful, we have had up to 13 visitors who came back for a second week!

Did you hear that Houston Horizon Chorus is still looking for a new director? We have a very active committee that is currently taking applications. More information can be found on our

website, www.houstonhorizon.org. HHC couldn't be more excited about the possibilities ahead of us!

Check out our ad on
page 23

In Memory



MARTIE HEYDE

THE WOODLANDS SHOW CHORUS

The Woodlands Show Chorus lost a valuable member and great friend when Martie Heyde passed away on January 7, 2014.

Sweet Adelines was a big part of Martie's life and brought her great joy. She was a veteran Sweet Adeline, having sung in 3 choruses and multiple quartets over a 20-year period. As a charter member of TWSC, she was a key person in getting our chorus organized. She was an inspiring leader, a proactive Finance Manager, and a dynamic fundraiser.

As a singer and performer, Martie was a stellar bass who joyfully participated in all rehearsals and performances. One member said that she loved Martie's voice; it reminded her of velvet.

As our friend, she gave an abundance of hugs, support, enthusiasm, smiles, and laughter. To know her was to love her. She had a great sense of humor and was a caring, welcoming, nurturing person whose beautiful smile lit up the room.

The word "Joy" was her mantra, and she exhibited it in all facets of her life. Monday was her "Joy Day" as she looked forward to rehearsal. Martie sang with joy and found joy in all things.

She was the consummate Sweet Adeline and the best of friends. She was totally loved by us all, and we will greatly miss her. We know that she is joyfully singing bass in the heavenly choir.



Magic Valley by Shirley Valentine

What an exciting season this has been for Magic Valley Chorus! We welcomed back our Winter Texan Members just in time for a December full of performances! Our annual shows at Tower Theater opened the season with faithful audiences of Barbershop fans, followed by Hidalgo Festival of Lights. We sang at Casa Del Sol, a local park, at McAllen's Battered Women's Shelter's Luncheon, and at two local nursing homes. We also experienced four special performances – Pan Am Round Table's Mother-Daughter Luncheon, Mission Police Department's Toy Giveaway, the first ever Tamale Fest in the RGV, and an appearance on our local FOX TV on Christmas Day.

January found us working hard to prepare for our annual show, "Barbershop 4 All Seasons", Feb.1. We held our Global Open House with an enthusiastic group of visitors

who enjoyed our music, joining us to learn a tag. They were introduced to a little barbershop history, and mingled with us while sampling a delicious array of food. We sang in Alamo for the Grand Opening of an expansion to Ric Brown's Funeral Home, a festive occasion, where we were treated to a tasty BBQ at the conclusion of our performance.

We were very happy to welcome two new members recently. Catherine Raftery, a new arrival from Ireland, has joined the Leads. Cathi Svetlecic is our newest Bass. They are both great assets to our chorus as we prepare for competition in the new Open Division. We look forward to seeing you there.



Piney Hills by Sallie Rose Hollis

Piney Hills Harmony and its quartets have recently sung at several venues, added eight members, participated in Sweet Adeline International's Global Open House and enjoyed a full coaching schedule.

In both October and January the chorus sang at the Northeast Louisiana War Veterans Home in Monroe. The January visit included holiday gift bags and also stops at Azalea Estates assisted-living facility and Avalon Place nursing home. Another October perfor-

mance: Monroe's Downtown River Market.

In November the quartet Rhapsody! was among featured performers during the Holiday Arts Tour in Ruston, La. Rhapsody! also sang for the women's ministry fall celebration at Monroe's House of Prayer Church.

In November 4, His Glory quartet sang for the Monroe Council on Aging and also entertained at Landmark Nursing and Rehab. In December they sang for Kilpatrick

Funeral Home's "Reach Across America."

Seven rookies and one returning CAL member joined the chorus on stage Dec. 15 for "O Holy Night: A Celebration in Song" in West Monroe. (Please see Rookie Section for names.)

January activities included our Open House, coaching with Rich-Tone Connie Light and eight members attending Winter Regional Meeting. Region 10's Betty Clipman was scheduled for coaching

Feb. 6, with Robin Curtis of Twin City Sensations Chorus on Feb. 22.



Lisa Holmes with veteran wearing Duck commander hat gift

Director Search

After 13 years of directing Houston Horizon Chorus, our beloved director, Vickie Dennis, has moved to Virginia to be near grandchildren.

Houston Horizon Chorus is looking for someone with 3 -5 years experience in directing in the barbershop style, who has an ability to teach, a positive attitude, and a willingness to work hard to bring our chorus to the next level.

For more information, visit our chorus website at www.houstonhorizon.org or contact Carin Williamson at 713-419-1546 or email willsing01@gmail.com





Southern Acappella Sound by Dottie Smith

Greetings Sweet Adeline sisters! SASC, the Monroe chapter of Sweet Adeline's, is having an exciting holiday season and winter. In December we were blessed in our Christmas Caroling adventure to perform at five Monroe nursing homes and the VA Retirement Center. The air was filled with excitement when three guests visited us as the Christmas season began.

The new year got underway with six members of the chorus attend-

ing the Winter Regional Workshop with Peggy Graham. We won the "Mission Belle Award" for six driving 303 miles to Houston from the Monroe area. What a fun surprise!

At the workshop we learned a lot about stage production, how to develop choreography from historical productions, and many fun vocal exercises. We love that chocolate ice cream, don't you? I don't want to forget getting to see the Young Women in Harmony compete!

Best wishes to all as you put on the finishing touches to your performances for April.

See you in Houston!!!



Mission Belles Award picture

Sparkling City by Mary Hower

The Sparkling City Chorus is once again in transition. Sean Maloney found himself stretched too thin between pastoring, parenting and barbershopping and opted to give up directing the chorus at Christmas. As luck would have it, Janie Macchiaroli and Carol Mouche were scheduled for a regional visit on January 14 and gave the chorus some valuable guidance. Janie has agreed to be our interim director for the time being and will be with us competition weekend. We feel very for-

tunate to have her on board not only for her talent and experience but because she's just a wonderful person!!

As a result of our booth at the Home and Garden Show, the chorus gained a new member in November. Her name is Cathy Chaney and she's doing a great job in the lead section.

The chorus had several singing engagements though out the holidays with performances by

small groups and quartets but the highlight of the season was our annual Christmas party hosted by our president Marge DeWitt.

Now that we have the nut sales fundraiser behind us, it's on to our next fundraiser which is Valentine Sing-a-Grams. Once again we have several quartets ready to serenade lovers throughout the Coastal Bend with barbershop harmony.



Janie Macchiaroli, Interim Director

Spirit of Southeast Texas by Debbie Keith

The unusually cold weather this year and at the end of last year caused many Sweet Adeline plans to be either postponed or cancelled altogether. There were also some very good days that allowed us to perform at the Retired Teachers Luncheon, Pelican Bay Assisted Living, and the First United Methodist Church in Nederland. The Spirit of Southeast Texas celebrated SAI Global

Open House on January 30 with an induction of two new members: Shirlee Avis and Kelly Ellis. Jimmie Hargrove would have been inducted at the same time but was absent due to illness. Several visitors, including some first-timers, participated in the rehearsal and some even promised to return. We have also welcomed back from Associate status Joni Miller. And Jeana

Evans has also been inducted as a member of the chorus. All of these members are either former Sweet Adelines or they are dual members. We are working hard to prepare for Regional Competition and have several coaching sessions and a retreat weekend in the coming weeks.



Global Open House

Texas Harmony by Mary K McDonald



Top: Webcast Slumber Party
Bottom: Breast Cancer Walk



Since we last "met"...

September. On a beautiful Saturday morning, 13 Texas Harmony singers were honored to sing the National Anthem to kick off Making Strides Against Breast Cancer 5K Walk in Irving. (Before spell-checking, I had typed "beast" instead of "breast"; hmm...) Hero status is reserved for cancer survivors, but it was indeed a privilege for Texas Harmony to be even a small part of the event.

October. We were contacted by the delightful, 90-year-old retired Sweet Adeline, Ruby Upp. It seems Ruby was seeking a happy home for her collection of Sweet Adelines records and posters from as early as the 1950s. One of our members went to her home to pick up the treasures and share memories.

November. Ah, Hawaii! A worthy contingent from Texas Harmony joined others, leaving the **HOUSTON HORIZON** at precisely **5 O'CLOCK**

SOMEWHERE to witness **SOUNDWISE** singers from around the world participate in the **ESSENCE** of a cappella harmony!

December/January. Ice, anxiety, more ice, anxiety again. Sweet Adelines are not easily defeated, and holiday festivities ultimately prevailed! For the first rehearsal following the Christmas break, the furnace was out-of-order. With warm coats and "Darlene vocal warm-ups", it was business as usual. Full contest mode has begun!

The Woodlands Show Chorus by Kay Hammett

Wow! What a year this has been for TWSC. It is now confirmed that we should have been named "whirlwind" chorus. As it became known that The Woodlands community had a show chorus, opportunities started rolling in. The holiday season was exceptionally busy with "Daybreak" Chorus (TWSC's daytime chorus) performing for several events prior, during and after the holidays including chorus representation at the "The Lighting of the Doves" and our first Holiday

Show. So many events in such a short time!

Workshops were conducted from 6-7 on Monday evenings for personal development. Topics included vocal production, air control, building stamina, visual presentation and others chosen by our talented music team. Yep, still hear FACE, SPACE and PLACE every week, which continues into 2014.

2013 brought some awesome new singers into our organization, including Lorri

Masse (Lead), Deb Coniff (Bass), Karen Johnson (Bass), Barb Feighner (Lead), Barbara Crain (Tenor), Faline Christensen (Bari), Claudia Lasiter (Bari), Alice Haagen (Lead), and now 2014 has given us Kellie Welsh (Bari). So much talent and so much joy was added with every voice.

On a sad note, TWSC lost a prominent member this month to cancer. It was Martie Heyde's Monday night "JOY" that became the theme of The Woodlands Show Chorus. She

leaves a legacy of friendship, laughter, enthusiasm and excellent bass singing. She will be remembered forever as a key founder of The Woodlands Show Chorus and would have been proud that our joy continues into 2014.



BALTIMORE 2014 INTERNATIONAL CONVENTION



November 3-8, 2014

REGISTRATION BY FAX, EMAIL OR ONLINE IS NOW OPEN!

Click [here](#) for a printable registration sheet for our 68th Annual Convention and Competition in Baltimore! If you would like to fill out the form and send via email, [click here](#) for a fillable form. To register online, log in to the [Members Only](#) section of the website and select the Meeting Registration option.

If you have questions, please contact Tracy Shoghi at tracyshoghi@sweetadelineintl.org or by phone at (800) 992-7464 ext. 137.

Have you made your plans yet?
Click above for more information

5 O'Clock Somewhere! Carolyn, Kerri, Pam, & Sheri

WOW!! What a great time we all had in Hawaii at International Contest. We were so pleased to be representing Region 10 in that great state. Our experience, especially for the two of us who were first timers, was exceptional and we will never forget the "at home" feeling we got on the stage as we walked out and heard you all yelling for us. All

though our performance wasn't as stellar as it could have been, we still feel very proud and humble at the same time for the opportunity to have that experience. We had many opportunities to have fellowship with our other two Region 10 quartets who were there with us.

In addition to the contest ex-

perience, we did a little site seeing along the way and enjoyed seeing the many wonders of Hawaii life. Beautiful experience any way you look at it.

Thanks again Region 10 for all your support in helping us make that wonderful trip. We are now back to "real time" and again preparing for regional competition in April. See you there!!!



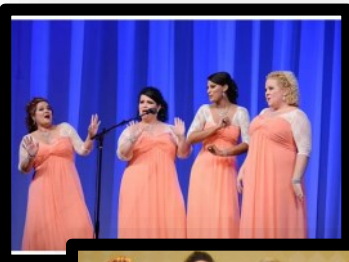
Essence Caitlyn, Candice, Kerry, & Lisa

It's hard to believe that three months have passed since International Competition in Hawaii! We had such an amazing time and are so thankful for the support of our Region 10 sisters. Following our return to the mainland, December brought a major shift in Essence. Tianna's husband began the next phase of his training with the US Army and they have been reassigned to Ft. Bragg, North Carolina. We are

so grateful for the time we had singing with Tianna and were honored to finish our time together with an International competition and the Alamo Metro Chorus 25th Anniversary show.

We are pleased to announce that our new bass is Lisa Deiser! A lifelong barbershopper, Lisa has been very active in Region 10 quartet activities, most notably as part of the 2008 Championship Quartet,

Prelude! Lisa has worked closely with Essence, serving as a visual coach and mentor! We are off to a great start! The four of us were blown away by our experience at Winter Regional. We were honored to work with Peggy Gram and Darlene Rogers! Our quartet coaching quickly continued with Mary Ann Wydra and the Awesome Joe Connelly! We look forward to seeing our Region 10 sisters in April!



Fourmost Bebe, Cindy, Heather, & Robin

Greetings from Fourmost Quartet! We had a very 'singy' Christmas season and it was wonderful! 2014 right along with performances, rehearsals, coaching and costume preparations for Regional competition. We were privileged to participate in the Mock contest at the Winter Regional Meeting with Peggy. We had excellent coaching by Janie Macchiaroli, Carol Scherer and a bonus session with Jeanine Thibodeaux. We are four of eight "Edward's Girls", who WON the double-quartet contest! Along with Gerry Schmoker, Diane Johnson, Janet Rudd and Carol Karna, we look forward to our front seats at the Show of Champions!

Our preparations for Regional contest are in high gear. We recently spent three *life-changing* coaching hours with the "AWESOME" Joe Connelly! Our chorus director,

Mary Ann Wydra, with all her accolades, is an amazing local resource ...and friend to us!! Valentine's Day will be devoted to raising money for Alamo Metro Chorus by delivering singing telegrams...fun! As always, we welcome you to visit and keep in touch with us at <https://www.facebook.com/FourmostQuartet>

See you in April!



is rolling
tion. J
Gram.

The Mad Hatters *Beth, Gerry, Pat, & Diane*



The Mad Hatters

The Mad Hatters had a fun Christmas season this year as we sang for three very diverse groups. First was for the residents of the Texas 281 Recreational Vehicle Park. Many had never heard barbershop-style singing before and were so enthusiastic. We next sang at The Threads of Love Ministry luncheon. This is a group of women who sew tiny baby outfits for preemies and for those precious babies who have passed away to be buried in. It was a privilege to sing for these loving ladies and our own Beth is one of their most loyal volunteers. Next, we performed at the Argyle Club for an audience that was comprised of The Captain Augustus Jones Chapter of the United States Daughters of 1812 and the Robert Speer Chapter Colonial Dames of the Seventeenth Century (CDXVIIIC). They were a great audience and we left them laughing with our signature song. We are now working on some new music before Diane takes off on vacation. I hope all quartets have as much fun as the Mad Hatters do at their rehearsals; with loving friends, fun, music and sometimes food who could go wrong?



Mix & Match *Marci, Marlene, Michelle, & Rosemary*

Mix and Match had a busy and fun winter. We performed on the Arlington Good Time Chorus holiday show. The Dallas ice storm forced a holiday performance to be rescheduled for January. So, we sang holiday songs as requested then we had our Christmas Party...yes, after Christmas! As the "Secret of Christmas" lyric says, we like doing Christmas things all year through!!!

Now it's time to rev it up for competition. The winter re-

gional meeting was the most awesome quartet coaching we have ever had at this event. Janie Macchiaroli, Mary Ann Wydra and Peggy Gram.....need I say more?! We left with plenty of homework and tons of enthusiasm. Next, sessions with Ruth Ann Parker and Bob Calderon coming up. We're going into our 4th competition and for the first time, we'll be returning with the same baritone!!! Thanks, Michelle.

We continue working on our

25 minute presentation package to make it fun for us and for the audience. Of course, we'll be doing Singing Valentines, too. We've built our repertoire to 26 songs with a few more to be added soon.

Our motto still remains, "We sing at the drop of a napkin...and we carry our own napkins!"

Good luck to all the competing quartets.



QUARTET CONTEST

3:00 P.M.

FRIDAY NIGHT, APRIL 4TH

DON'T MISS IT!

SoundWise Bonnie, Jane, Melissa, & Ronda

Hi there Region 10! We just got back from the lovely beaches of Hawaii and boy, are our arms tired! We heard your cheers all the way across the Pacific and we want to say thank you again for your love and support. We also want to extend a warm thank you to Janet Burnett for being our Rent-a-Tenor for international.

This has been an interesting but exciting year for SoundWise. Our lovely baritone, Denise, needed to dedicate more time to

family, so she stepped down. We searched around San Antonio and found a local lady, Bonnie Smith, to step in. She happily accepted and made her Regional debut at the Winter Regional Meeting this past January, and she did great! Bonnie is very grateful for the opportunity to join the awesome ranks of SoundWise Quartet!

With our new configuration, we've been blessed to receive coaching from Peggy Gram, Darlene Rogers, Mary Ann Wydra and Jeannine

Thibodeaux. Ronda, Jane, Melissa, and Bonnie all want to give a warm thank you to all of our coaches we've had so far! SoundWise is very excited about our upcoming coaching sessions including the "Awesome" Joe Connelly and Mary Ann Wydra.

We've been working really hard on our music for this year's regional contest. With the help of our coaches, hard work and dedication, and joy we get with being a part of such a wonderful organization, we are going to ROCK Spring Regional contest!



Quadrphonics Leah, Amanda, Kristen, & Laurie

Hello Region 10! Meet Quadrphonics, one of your newly-formed quartets. Leah, Amanda, Kristen, and Laurie are all fairly new Sweet Adeline's, with experience ranging from 11 months to 4 years. We are all members of Houston Horizon Chorus. This is the first quartet competition for each of us and we are extremely excited for the opportunity come this April!

In the upcoming months we are working to get some coaching lined up and looking forward to some public singing experiences. We have a great gig lined up at an Adult Sunday School monthly dinner at Tal-lowood Baptist Church at the end of February.

If you would like to join us on this new journey, please feel free to follow us on Facebook:
www.facebook.com/Quadrphonicsquartet



THE PIN PAL PROGRAM

Great Gulf Coast Region 10 "Pin Pals" Program (established 2013)

Concept: In the interest of learning more about our region's choruses and each other, each chorus will create/obtain lapel pins that their members will trade with other chorus members during regional events. The idea is to really meet the person you exchange with, so when you look at the pin several months after you receive it, you can tell someone "Becky gave this to me. She sings baritone in Harmony Blends Chorus." We also want to instill a sense of pride in your chorus.

Details:

- Funding -- There is no funding from the Region for this -- each chorus is on its own creatively and financially.
- When -- Have the pins ready for your members to begin exchanging at Fall Regional [Sept 20-21, 2013]. (and every Regional meeting/contest thereafter)
- Amount -- Ideally, each chorus member should have at least (2) pins to exchange at each event. Smaller choruses, don't fret -- fewer members/pins will make collecting yours more 'special.'
- Dimension -- preferably no more than 1.5 inches in diameter.
- Shape -- any shape within 1.5-inch limit
- Color -- any color
- Design -- something that represents YOUR chorus that you can use for several years. Ideas: geographic, food, culture, flower, bird, armadillo, bluebonnet, star, heart, roadrunner, beachball, fleur de lis, crawfish, pine tree, train, chili pepper, lasso, longhorn, shape of state, cotton, pecan, pelican. Note: the "pin" can be attached with magnet if preferred.

Notes:

- This is a voluntary program. Your chorus does not have to participate, but it sure would be fun if everyone did!
- Lapel pin does NOT have to have your chorus name or logo printed on it.
- Recommend do NOT put a year on it (so you can use it for awhile, especially if you purchase/make in quantity).
- Be creative. Encourage members to scout out local stores (purchase locally if you can). Someone can design or you can purchase "off the shelf." Consider holding a design contest to involve your members. Keep costs to your chorus as low as possible.
- If you make your own, be sure they are good quality materials so they will hold up.
- As a fundraiser for International in Baltimore, The Woodlands Show Chorus will be creating sashes/lanyards to display these pins. They will have a booth at the Fall 2013 meeting. If you have a specific "chorus color," let them know and they will try to have some available in that color for you. Contact Bobbie Groeschel directly at bjgroes@sbcglobal.net.

Questions about the program? Contact Membership Coordinator Carol Mouché at Region10mem@aol.com

05/20/13

Great Gulf Coast
Region 10
Sweet Adelines
International

Region 10 Website:
<http://www.region10sai.org/>

*Great Gulf Coast Region 10 provides
opportunities to women for education,
performance, leadership, and personal growth to
advance 4 part a cappella singing.*



*Harmonize the World.
Through Barbershop
Song*



CALENDAR OF EVENTS

Check the Regional website for up
to date information about upcoming
events.

Events Calendar



2014

3/22 Austin Harmony—On the Road to Blue Skies—Austin, TX

4/3-6 Regional Competition—Houston Hilton North

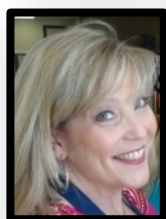
5/16-17 Chapter Leaders' Seminar—Houston, TX—Faculty: Molly Huffman & Paula Davis

6/21 Summer Area School—Location TBD—Regional Faculty

9/19-20 Fall Regional Meeting—Visual Focus—Houston, TX—Judy Pozsgay

11/4-8 International Competition—Baltimore, MD

Jan Feb Mar Apr May Jun Jul Aug Sep Oct Nov Dec



**Kerri Mauney —
Editor,
Tune in with Ten**

**17706 Placid Trails Dr.
Tomball, TX 77377
281-731-4518**

reg10tiwt@gmail.com

Stay Connected with Region 10

All active and CAL members are encouraged to sign up for the Region 10 Yahoo e-group and/or our Facebook page. The e-group is our most timely method for disseminating information that is important to you—registration and flyers for area schools and contest, updated links on our regional website, this TIWT newsletter, and valuable information for your chorus leaders, directors, and quartets.

It's easy and free to join. Just send an email to sa-region10-suscribe@yahoogroups.com and we'll do the rest.

If you're on Facebook, find us under "Great Gulf Coast Region 10, Sweet Adelines International."

Note: We have converted from our former FB group — look for the comma in our name.

Join the discussion!

